

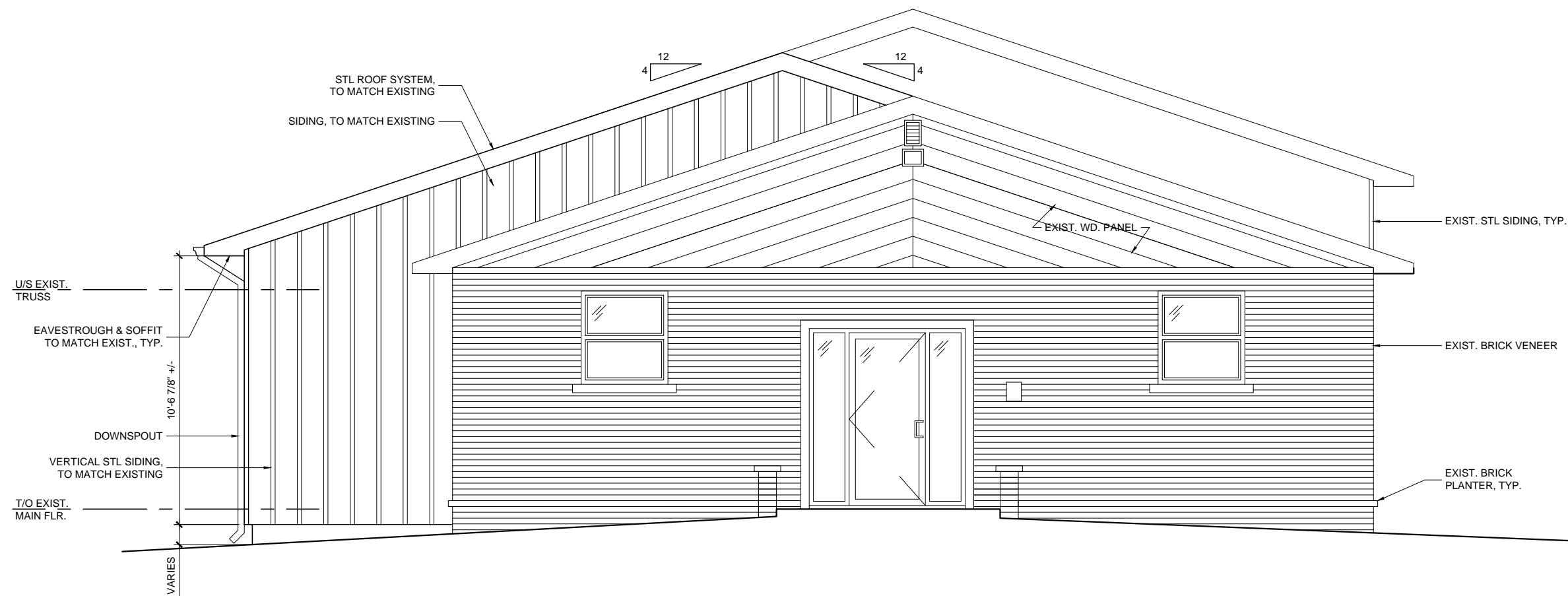
**R·RITZ**  
**ARCHITECT**  
 322 ONTARIO STREET  
 STRATFORD · ONTARIO  
 N5A 3H8 (519) 271-4603

ADDITION AND SITE IMPROVEMENTS TO  
**DASHWOOD COMMUNITY CENTRE**  
 158 CENTRE ST, DASHWOOD ON  
**PROPOSED PARTIAL MAIN FLOOR PLAN**  
 OCTOBER 26, 2016



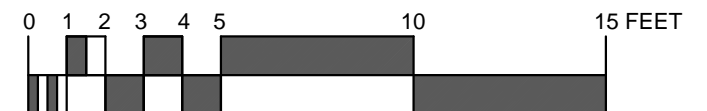




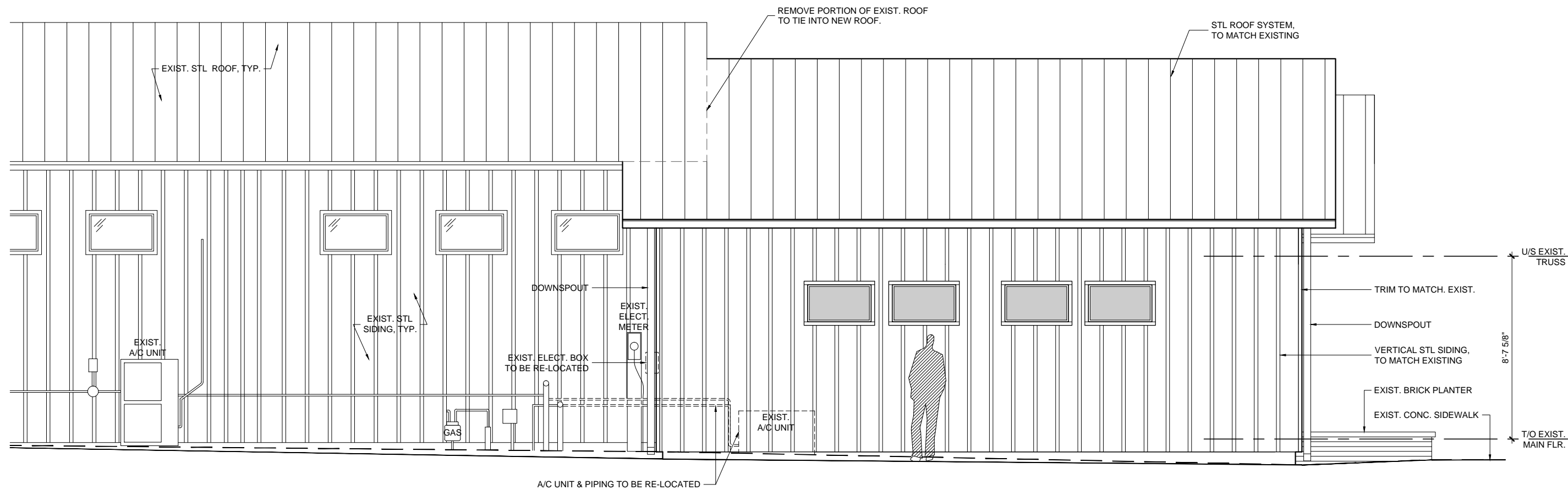


**R·RITZ**  
**ARCHITECT**  
 322 ONTARIO STREET  
 STRATFORD · ONTARIO  
 N5A·3H8 (519) 271·4603

ADDITION AND SITE IMPROVEMENTS TO  
**DASHWOOD COMMUNITY CENTRE**  
 158 CENTRE ST, DASHWOOD ON  
**PROPOSED FRONT ELEVATION**  
 FEBRUARY 8, 2017







**R·RITZ**  
**ARCHITECT**  
 322 ONTARIO STREET  
 STRATFORD · ONTARIO  
 N5A·3H8 (519) 271·4603

ADDITION AND SITE IMPROVEMENTS TO  
**DASHWOOD COMMUNITY CENTRE**  
 158 CENTRE ST, DASHWOOD ON  
**PROPOSED SIDE ELEVATION**

FEBRUARY 8, 2017





## CENTRE STREET

