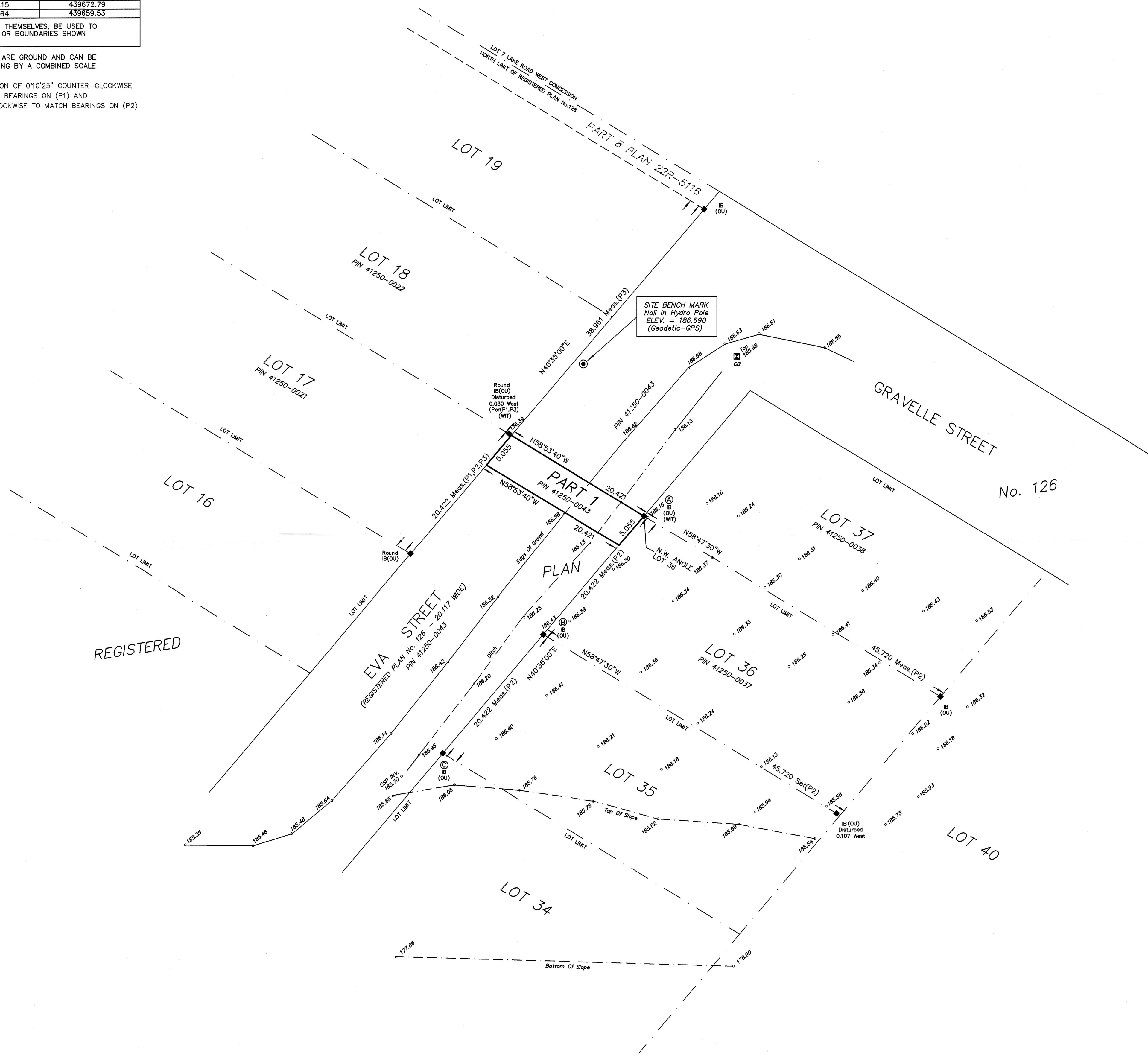


INTEGRATION DATA		
COORDINATES ARE DERIVED FROM GPS OBSERVATIONS USING SMARTNET NETWORK AND ARE REFERRED TO UTM ZONE 17 (81° WEST LONGITUDE) NAD83 (CSRS) EPOCH 2010. COORDINATE VALUES ARE TO A RURAL ACCURACY IN ACCORDANCE WITH SECTION 14(2) OF O.REG.216/10		
POINT ID	NORTHING	EASTING
A	4797950.64	439686.08
B	4797935.15	439672.79
C	4797919.64	439659.53
CAUTION: COORDINATES CANNOT IN THEMSELVES BE USED TO RE-ESTABLISH CORNERS OR BOUNDARIES SHOWN ON THIS PLAN.		

DISTANCES SHOWN ON THIS PLAN ARE GROUND AND CAN BE CONVERTED TO GRID BY MULTIPLYING BY A COMBINED SCALE FACTOR OF 0.99956

FOR BEARING COMPARISONS, A ROTATION OF 0°10'25" COUNTER-CLOCKWISE CAN BE APPLIED TO MATCH BEARINGS ON (P1) AND A ROTATION OF 0°13'30" COUNTER-CLOCKWISE TO MATCH BEARINGS ON (P2)



I REQUIRE THIS PLAN TO BE DEPOSITED UNDER THE LAND TITLES ACT	PLAN 22R-		
DATE: _____	RECEIVED AND DEPOSITED DATE: _____		
D.A. CULBERT ONTARIO LAND SURVEYOR	REPRESENTATIVE FOR LAND REGISTRAR FOR THE LAND TITLES DIVISION OF HURON (No 22)		
PARTS SCHEDULE			
PART	LOT/BLOCK	PLAN	PIN
1	Part of EVA STREET	126	PIN 41250-0043
THIS PLAN COMPRISES PART OF PIN 41250-0043			

PLAN OF SURVEY
OF PART OF
EVA STREET
REGISTERED PLAN No. 126
GEOGRAPHIC TOWNSHIP OF STEPHEN
MUNICIPALITY OF SOUTH HURON
COUNTY OF HURON
SCALE 1:300
Metric
2021
D. CULBERT LTD.
ONTARIO LAND SURVEYOR

NOTES AND LEGEND

BEARINGS HEREON ARE GRID (SEE INTEGRATION CHART FOR DETAILS)

- DENOTES MONUMENTATION FOUND
- DENOTES MONUMENTATION PLANTED
- SIB DENOTES 2.5cm sq. STANDARD IRON BAR
- SSIB DENOTES 2.5cm sq. SHORT STANDARD IRON BAR
- IB DENOTES 1.6cm sq. IRON BAR
- OU DENOTES ORIGIN UNKNOWN
- WT DENOTES WITNESS
- AGM DENOTES ARCHIBALD GRAY & MCKAY LTD., O.L.S.
- 1527 DENOTES D. CULBERT LTD., O.L.S.
- P1 DENOTES PLAN 22R-5116
- P2 DENOTES REGISTERED PLAN No. 126
- P3 DENOTES A PLAN OF SURVEY BY (1527) PLAN 2-GA-0938
- ALL PINS ARE SUFFIXED (LT) UNLESS NOTED (R)
- 100.00 DENOTES EXISTING SPOT ELEVATION

METRIC: DISTANCES AND CO-ORDINATES SHOWN ON THIS PLAN ARE IN METRES AND CAN BE CONVERTED TO FEET BY DIVIDING BY 0.3048

SURVEYOR'S CERTIFICATE:

I CERTIFY THAT:

1) THIS SURVEY AND PLAN ARE CORRECT AND IN ACCORDANCE WITH THE SURVEYS ACT, THE SURVEYORS ACT AND THE LAND TITLES ACT AND THE REGULATIONS MADE UNDER THEM.

2) THE SURVEY WAS COMPLETED ON THE 2ND DAY OF SEPTEMBER, 2021

SEPTEMBER 10, 2021

D.A. CULBERT
ONTARIO LAND SURVEYOR

D. CULBERT LTD.
ONTARIO LAND SURVEYOR
GODERICH, ONTARIO PHONE: 519-524-5321

OGL
LAND SURVEYOR

DRAWN BY: BDCS	DIGITAL FILE: SP2104R1	PLAN No:
CHECKED BY: DAC	FILE No: STE-0126-0-12	8-GL-1396