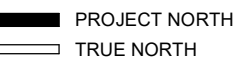




185 YOUNG STREET,
AMILTON, ON L89 1V9
905 525 9000 | invizij.com

[illegible]

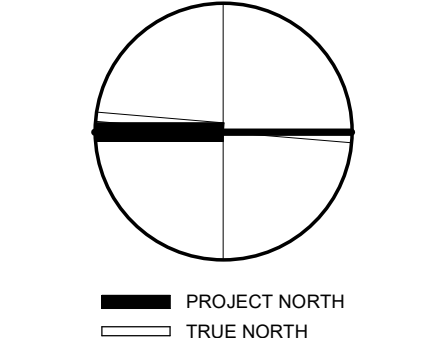
DO NOT SCALE DRAWING. DIMENSIONS ARE TO BE CHECKED AND VERIFIED BY THE CONTRACTOR ON SITE.

ALL DRAWINGS, SPECIFICATIONS, AND RELATED DOCUMENTS ARE THE COPYRIGHT PROPERTY OF THE ARCHITECT AND MUST BE RETURNED UPON REQUEST. REPRODUCTION OF DRAWINGS, SPECIFICATIONS, AND RELATED DOCUMENTS IN WHOLE OR IN PART IS STRICTLY FORBIDDEN WITHOUT THE ARCHITECT'S WRITTEN PERMISSION.

THIS DRAWING SHALL NOT BE USED FOR CONSTRUCTION PURPOSES UNLESS COUNTERSIGNED BY INVZU ARCHITECTS INC.

PROJECT NAME:	
South Huron Recreation Centre Upgrades	
PROJECT ADDRESS:	
94 Victoria St E, Exeter, ON N0M 1S1	
PROJECT NO.:	
22012	
DRAWING TITLE:	
SITE PLAN	
PLOT DATE:	
DRWN:	KB
CHKD:	BP
DATE:	01/13/22
SCALE:	1 : 250
DRAWING NO.:	
A1.00	

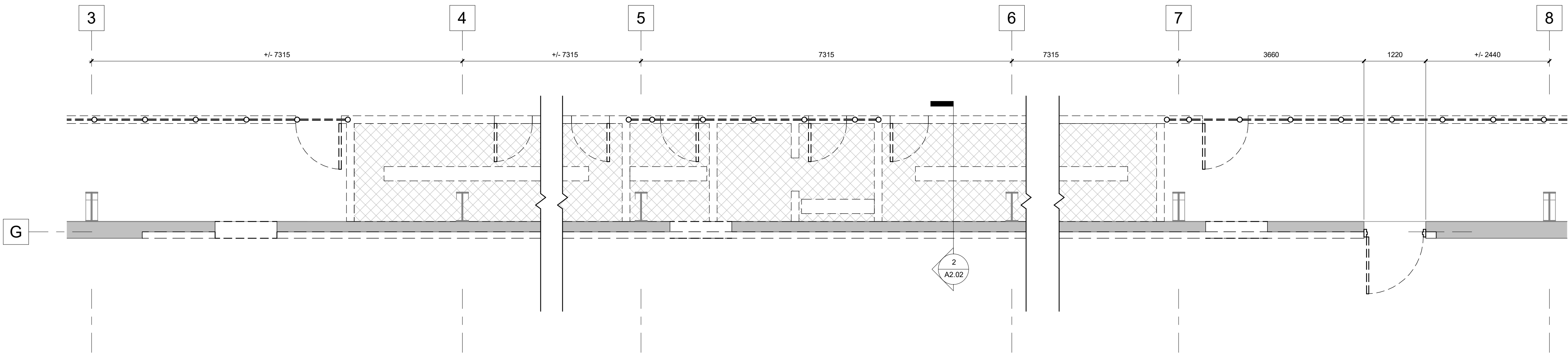
REV.	DESCRIPTION	DATE
2	Re-Issued for 100% Schematic Design	2022/03/04
1	Issued For 100% Schematic Design	2022/02/28



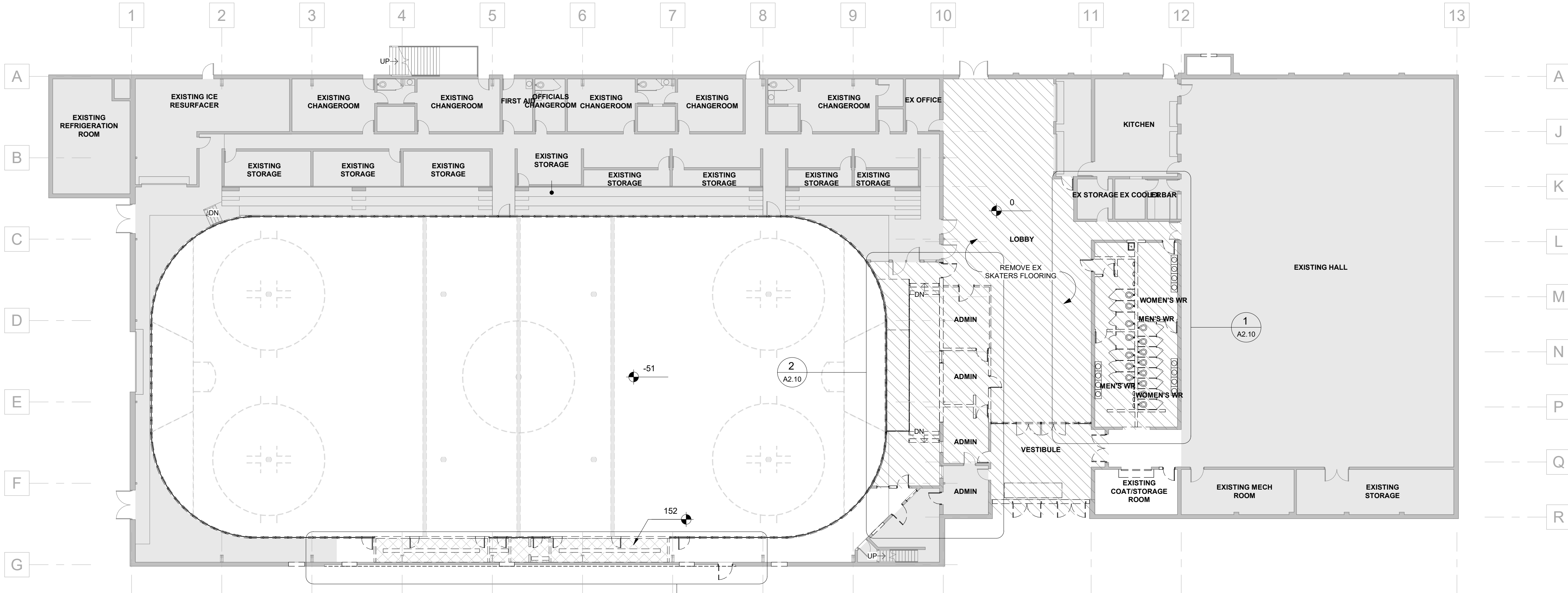
DO NOT SCALE DRAWING. DIMENSIONS ARE TO BE CHECKED AND VERIFIED BY THE CONTRACTOR ON SITE.
ALL DRAWINGS, SPECIFICATIONS, AND RELATED DOCUMENTS ARE THE COPYRIGHT PROPERTY OF THE ARCHITECT AND MUST BE RETURNED UPON REQUEST. REPRODUCTION OF DRAWINGS, SPECIFICATIONS, AND RELATED DOCUMENTS IN WHOLE OR IN PART IS STRICTLY FORBIDDEN WITHOUT THE ARCHITECT'S WRITTEN PERMISSION.
THIS DRAWING SHALL NOT BE USED FOR CONSTRUCTION PURPOSES UNLESS COUNTERSIGNED BY INVIZIJ ARCHITECTS INC.

PROJECT NAME:	South Huron Recreation Centre Upgrades
PROJECT ADDRESS:	94 Victoria St E, Exeter, ON N0M 1S1
PROJECT NO.:	22012
DRAWING TITLE:	DEMO GROUND FLOOR PLAN AND ENLARGED DEMO PLAN
PLOT DATE:	
DRWN:	KB
CHKD:	BP
DATE:	02/14/22
SCALE:	As indicated
DRAWING NO.:	A2.01

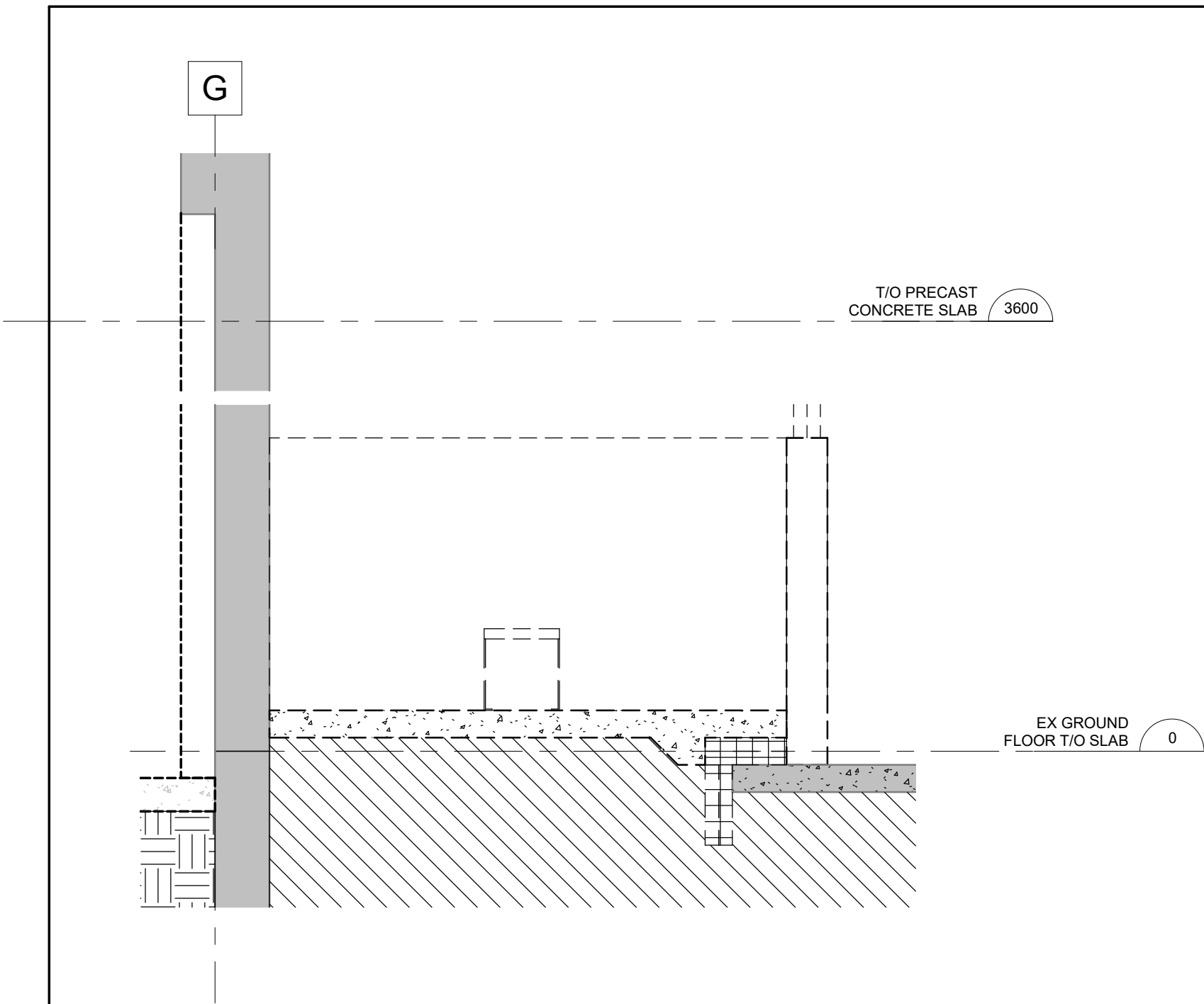
- LEGEND:**
- (E) TO DEMOLISH
 - (E) WALL TO REMAIN
 - (E) DOOR TO DEMOLISH
 - (E) DOOR TO REMAIN
 - EXTENT OF FLOOR SLAB TO BE DEMOLISHED
 - EXTENT OF FLOOR FINISH TO BE DEMOLISHED
 - (E) FLOOR TO REMAIN
- GENERAL NOTES:**
- REFER TO STRUCTURAL FOR ASSOCIATED DEMOLITION.
 - REFER TO MECHANICAL AND ELECTRICAL FOR ASSOCIATED DEMOLITION FOR ASSOCIATED DEMOLITION. COORDINATE WITH MECHANICAL FOR EXTENT OF CHANGES TO (E) PLUMBING, HEATING, VENTILATION AND SPRINKLER SYSTEMS. COORDINATE WITH ELECTRICAL FOR EXTENT OF CHANGES TO (E) LIGHTING, POWER, FIRE ALARM AND DOOR SECURITY SYSTEMS. (E) FLOOR AND ROOF STRUCTURE TO REMAIN, UNLESS NOTED OTHERWISE.
 - WHERE (E) SURFACES ARE DISTURBED DUE TO DEMOLITION OR ALTERATIONS AND NOT REQUIRED TO BE COVERED WITH NEW FINISHES, SUCH SURFACES SHALL BE PATCHED, REPAIRED AND MADE GOOD TO MATCH (E) ADJACENT MATERIALS AND FINISHES.
 - PATCH, REPAIR AND MAKE GOOD ALL MATERIALS AND FINISHES WHERE DISTURBED BY DEMOLITION AND ALTERATIONS. REFER TO ALL DOCUMENTS FOR FULL EXTENT OF WORK REQUIRED. NOTE THAT MAKING GOOD INCLUDES WORK ASSOCIATED WITH THE REMOVAL OF (E) AND INSTALLATION OF NEW SERVICES, ETC. (I.E. PLUMBING, HEATING, ELECTRICAL MODIFICATIONS IN THE (E) BUILDING, INSTALLATION OF NEW DUCTS, CONDUITS, ETC. IN THE (E) BUILDING, ETC.).
 - WHERE (E) PARTITIONS / FURNINGS / BUILDING FITMENTS, HOUSEKEEPING PADS, ETC. ARE BEING DEMOLISHED, PATCH, REPAIR AND MAKE GOOD SUBSTRATES TO RECEIVE NEW SPECIFIED MATERIALS AND FINISHES.
 - WHERE (E) FLOORING MATERIALS ARE INDICATED IN THE PLANS OR ROOM FINISH SCHEDULE, COMPLETELY DEMOLISH (E) FLOORING TO EXPOSE THE STRUCTURAL FLOOR SLAB. PATCH, REPAIR, FILL HOLES IN SLAB, AND MAKE GOOD (E) FLOOR SLAB TO BE SMOOTH AND LEVEL AND VOID OF WAVES, BUMPS IN MATERIALS / FINISHES, OR DEPRESSIONS. (E) FLOOR SLAB TO ACCEPT NEW SPECIFICATIONS AND FLOOR MANUFACTURERS REQUIREMENTS.
 - WHERE NEW CEILING MATERIALS ARE INDICATED ON THE REFLECTED CEILING PLANS OR ROOM FINISH SCHEDULE, COMPLETELY DEMOLISH (E) CEILING SYSTEMS AND BULKHEADS INCLUDING SUSPENSION SYSTEMS AND HANGERS, THEN INSTALL A COMPLETE NEW CEILING SYSTEM, UNLESS OTHERWISE NOTED.
 - WHERE (E) MATERIALS AND REQUIRED TO BE SALVAGED FOR REUSE, COMPLETELY CLEAN (E) SURFACES FROM DEMOLISH MATERIALS AND MAKE CLEAN AND READY FOR REINSTALLATION.
 - WHERE (E) SERVICES ARE BEING DEMOLISH AND (E) STRUCTURAL SLAB PENETRATIONS ARE EXPOSED, FILL (E) SLAB PENETRATIONS WITH CONCRETE WITH FIRE RATING TO MATCH (E) ADJACENT FLOOR SLAB AND PATCH, REPAIR AND MAKE GOOD (E) FLOOR SLAB TO BE SMOOTH AND LEVEL AND VOID OF WAVES, BUMPS IN MATERIALS / FINISHES, OR DEPRESSIONS. (E) FLOOR SLAB TO ACCEPT NEW SPECIFICATIONS AND FLOOR MANUFACTURERS REQUIREMENTS.
 - NOT ALL DEMOLITION IS SHOWN. CONTRACTORS TO SITE VERIFY AND DOCUMENT (E) CONDITIONS AND INCLUDE FOR DEMOLITION OF ALL REDUNDANT NON-ESSENTIAL BUILDING ELEMENTS INCLUDING BUT NOT LIMITED TO ABOVE CEILING FRAMING, REMAINING PLASTER/GWS CEILINGS, LIGHT FIXTURES, MECHANICAL AND ELECTRICAL SYSTEMS, BUILDING FITMENTS AND ACCESSORIES.
- DEMOLITION NOTES**
- (D-01) (E) WALL TO BE DEMOLISHED (INCLUDING BUT NOT LIMITED TO ALL SERVICES, FITMENTS, ACCESSORIES, ETC.) PATCH, REPAIR AND MAKE GOOD ALL ADJACENT SURFACES TO REMAIN TO ACCEPT NEW CONSTRUCTION AND FINISHES. REFER TO STRUCTURAL FOR DEMOLITION OF LOAD BEARING WALLS.
 - (D-02) DEMO PORTION OF (E) WALL FOR NEW OPENING. COORDINATE WITH NEW ARCHITECTURAL DRAWINGS & STRUCTURAL FOR LINTEL LOCATIONS.
 - (D-03) (E) WINDOW/DOOR FRAME AND SILL TO BE DEMOLISHED, INFILL OPENING WITH BLOCK TO MATCH.
 - (D-04) DEMOLISH (E) FLOOR FINISH TO EXPOSE (E) STRUCTURAL FLOOR SLAB. PATCH, REPAIR AND MAKE GOOD (E) FLOOR SLAB TO BE SMOOTH AND LEVEL AND READY TO RECEIVE NEW FLOOR FINISHES AND/OR TOPPING.
 - (D-05) (E) STAIRS, RAMP AND LANDING (c/w RAILINGS, ETC.) TO BE DEMOLISHED.
 - (D-06) (E) DOOR AND/OR WINDOW & FRAME TO BE DEMOLISHED.
 - (D-07)
 - (D-08)
 - (D-09) DEMOLISH PORTION OF (E) STRUCTURAL FLOOR SLAB TO ACCOMMODATE NEW CONSTRUCTION. REFER TO AND COORDINATE WITH NEW ARCHITECTURAL AND STRUCTURAL.
 - (D-10) (E) OPENING IN (E) FLOOR SLAB / DECK. MAKE GOOD EDGES TO ACCEPT NEW STRUCTURAL FRAMING AND FLOOR SLAB/DECK INFILL. REFER TO AND COORDINATE WITH STRUCTURAL.
 - (D-11) (E) STRUCTURAL COLUMN TO REMAIN. REFER TO AND COORDINATE WITH STRUCTURAL.



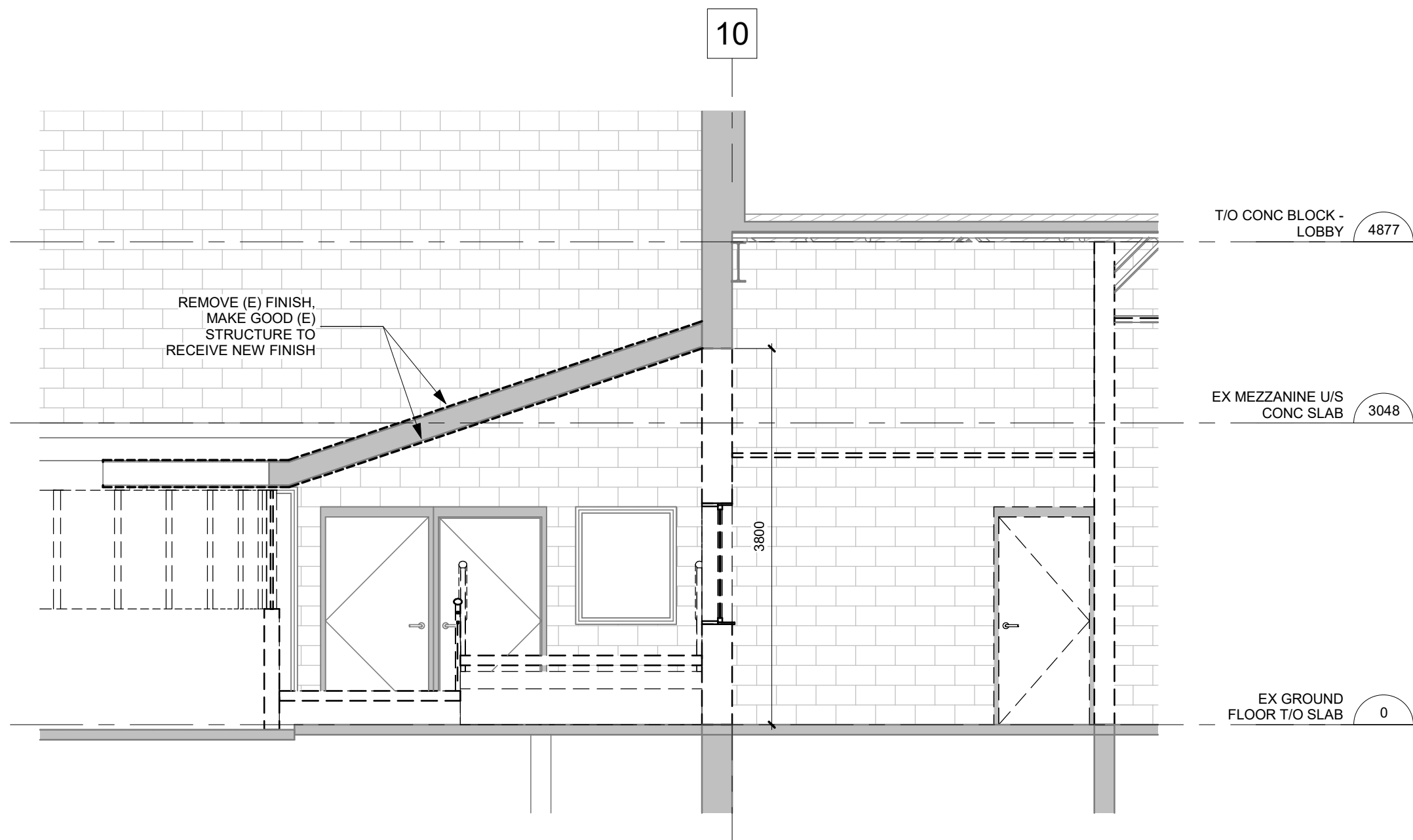
ENLARGED PLAYERS BENCHES DEMO PLAN 2
1 : 50 A2.01



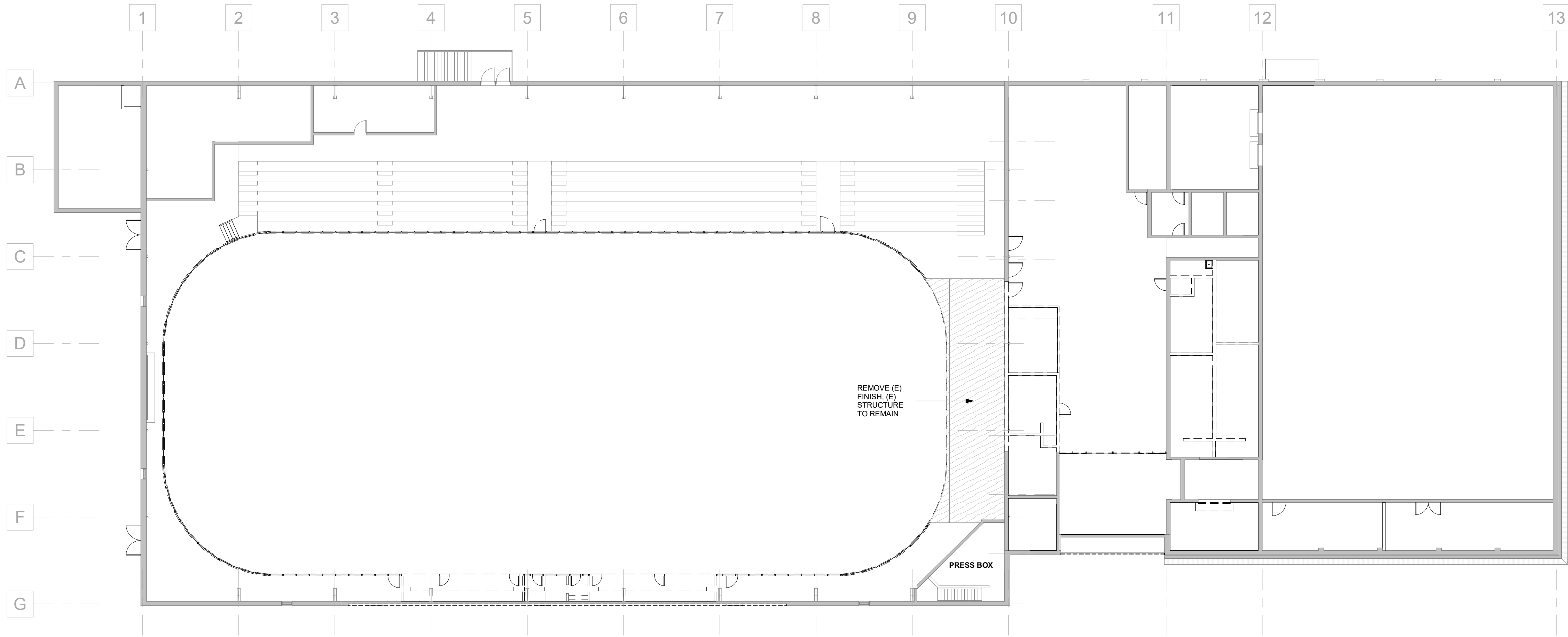
GROUND FLOOR PLAN 1
1 : 200 A2.01



RAISED SLAB DEMO SECTION 2
1 : 20 A2.02



WARM ROOM DEMO SECTION 3
1 : 50 A2.02



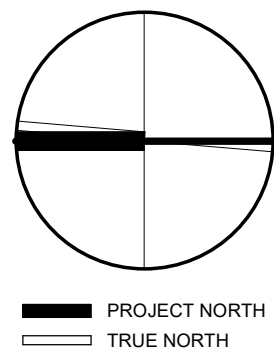
MEZZANINE DEMO PLAN 1
1 : 200 A2.02

- LEGEND:**
- (E) TO DEMOLISH
 - (E) WALL TO REMAIN
 - (E) DOOR TO DEMOLISH
 - (E) DOOR TO REMAIN
 - EXTENT OF FLOOR SLAB TO BE DEMOLISHED
 - EXTENT OF FLOOR FINISH TO BE DEMOLISHED
 - (E) FLOOR TO REMAIN

- GENERAL NOTES:**
- REFER TO STRUCTURAL FOR ASSOCIATED DEMOLITION.
 - REFER TO MECHANICAL AND ELECTRICAL FOR ASSOCIATED DEMOLITION. COORDINATE WITH MECHANICAL FOR EXTENT OF CHANGES TO (E) PLUMBING, HEATING, VENTILATION AND SPRINKLER SYSTEMS. COORDINATE WITH ELECTRICAL FOR EXTENT OF CHANGES TO (E) LIGHTING, POWER, FIRE ALARM AND DOOR SECURITY SYSTEMS. (E) FLOOR AND ROOF STRUCTURE TO REMAIN, UNLESS NOTED OTHERWISE.
 - WHERE (E) SURFACES ARE DISTURBED DUE TO DEMOLITION OR ALTERATIONS AND NOT REQUIRED TO BE COVERED WITH NEW FINISHES, SUCH SURFACES SHALL BE PATCHED, REPAIRED AND MADE GOOD TO MATCH (E) ADJACENT MATERIALS AND FINISHES.
 - PATCH, REPAIR AND MAKE GOOD ALL MATERIALS AND FINISHES WHERE DISTURBED BY DEMOLITION AND ALTERATIONS. REFER TO ALL DOCUMENTS FOR FULL EXTENT OF WORK REQUIRED. NOTE THAT MAKING GOOD INCLUDES WORK ASSOCIATED WITH THE REMOVAL OF (E) AND INSTALLATION OF NEW SERVICES, ETC. (I.E. PLUMBING, HEATING, ELECTRICAL, MODIFICATIONS IN THE (E) BUILDING, INSTALLATION OF NEW DUCTS, CONDUITS, ETC. IN THE (E) BUILDING, ETC.).
 - WHERE (E) PARTITIONS / FURNINGS / BUILDING FITMENTS, HOUSEKEEPING PADS, ETC. ARE BEING DEMOLISHED, PATCH, REPAIR AND MAKE GOOD SUBSTRATES TO RECEIVE NEW SPECIFIED MATERIALS AND FINISHES.
 - WHERE (E) FLOORING MATERIALS ARE INDICATED IN THE PLANS OR ROOM FINISH SCHEDULE, COMPLETELY DEMOLISH (E) FLOORING TO EXPOSE THE STRUCTURAL FLOOR SLAB. PATCH, REPAIR, FILL HOLES IN SLAB, AND MAKE GOOD (E) FLOOR SLAB TO BE SMOOTH AND LEVEL AND VOID OF WAVES, BUMPS IN MATERIALS / FINISHES, OR DEPRESSIONS. (E) FLOOR SLAB TO ACCEPT NEW SPECIFICATIONS AND FLOOR MANUFACTURERS REQUIREMENTS.
 - WHERE NEW CEILING MATERIALS ARE INDICATED ON THE REFLECTED CEILING PLANS OR ROOM FINISH SCHEDULE, COMPLETELY DEMOLISH (E) CEILING SYSTEMS AND BULKHEADS INCLUDING SUSPENSION SYSTEMS AND HANGERS. THEN INSTALL A COMPLETE NEW CEILING SYSTEM, UNLESS OTHERWISE NOTED.
 - WHERE (E) MATERIALS AND REQUIRED TO BE SALVAGED FOR REUSE, COMPLETELY CLEAN (E) SURFACES FROM DEMOLISH MATERIALS AND MAKE CLEAN AND READY FOR REINSTALLATION.
 - WHERE (E) SERVICES ARE BEING DEMOLISH AND (E) STRUCTURAL SLAB PENETRATIONS ARE EXPOSED, FILL (E) SLAB PENETRATIONS WITH CONCRETE WITH FIRE RATING TO MATCH (E) ADJACENT FLOOR SLAB AND PATCH, REPAIR AND MAKE GOOD (E) FLOOR SLAB TO BE SMOOTH AND LEVEL AND VOID OF WAVES, BUMPS IN MATERIALS / FINISHES, OR DEPRESSIONS. (E) FLOOR SLAB TO ACCEPT NEW SPECIFICATIONS AND FLOOR MANUFACTURERS REQUIREMENTS.
 - NOT ALL DEMOLITION IS SHOWN. CONTRACTORS TO SITE VERIFY AND DOCUMENT (E) CONDITIONS AND INCLUDE FOR DEMOLITION OF ALL REDUNDANT NON-ESSENTIAL BUILDING ELEMENTS INCLUDING BUT NOT LIMITED TO ABOVE CEILING FRAMING, REMAINING PLASTER/GWS CEILINGS, LIGHT FIXTURES, MECHANICAL AND ELECTRICAL SYSTEMS, BUILDING FITMENTS AND ACCESSORIES.

- DEMOLITION NOTES**
- (D-01) (E) WALL TO BE DEMOLISHED (INCLUDING BUT NOT LIMITED TO ALL SERVICES, FITMENTS, ACCESSORIES, ETC.). PATCH, REPAIR AND MAKE GOOD ALL ADJACENT SURFACES TO REMAIN TO ACCEPT NEW CONSTRUCTION AND FINISHES. REFER TO STRUCTURAL FOR DEMOLITION OF LOAD BEARING WALLS.
 - (D-02) DEMO PORTION OF (E) WALL FOR NEW OPENING. COORDINATE WITH NEW ARCHITECTURAL DRAWINGS & STRUCTURAL FOR LINTEL LOCATIONS.
 - (D-03) (E) WINDOW/DOOR FRAME AND SILL TO BE DEMOLISHED. INFILL OPENING WITH BLOCK TO MATCH.
 - (D-04) DEMOLISH (E) FLOOR FINISH TO EXPOSE (E) STRUCTURAL FLOOR SLAB. PATCH, REPAIR AND MAKE GOOD (E) FLOOR SLAB TO BE SMOOTH AND LEVEL AND READY TO RECEIVE NEW FLOOR FINISHES AND/OR TOPPING.
 - (D-05) (E) STAIRS, RAMP AND LANDING (c/w RAILINGS, ETC.) TO BE DEMOLISHED.
 - (D-06) (E) DOOR AND/OR WINDOW & FRAME TO BE DEMOLISHED.
 - (D-07)
 - (D-08)
 - (D-09) DEMOLISH PORTION OF (E) STRUCTURAL FLOOR SLAB TO ACCOMMODATE NEW CONSTRUCTION. REFER TO AND COORDINATE WITH NEW ARCHITECTURAL AND STRUCTURAL.
 - (D-10) (E) OPENING IN (E) FLOOR SLAB / DECK. MAKE GOOD EDGES TO ACCEPT NEW STRUCTURAL FRAMING AND FLOOR SLAB/DECK INFILL. REFER TO AND COORDINATE WITH STRUCTURAL.
 - (D-11) (E) STRUCTURAL COLUMN TO REMAIN. REFER TO AND COORDINATE WITH STRUCTURAL.

REV.	DESCRIPTION	DATE
2	Re-Issued for 100% Schematic Design	2022/03/04
1	Issued For 100% Schematic Design	2022/02/28

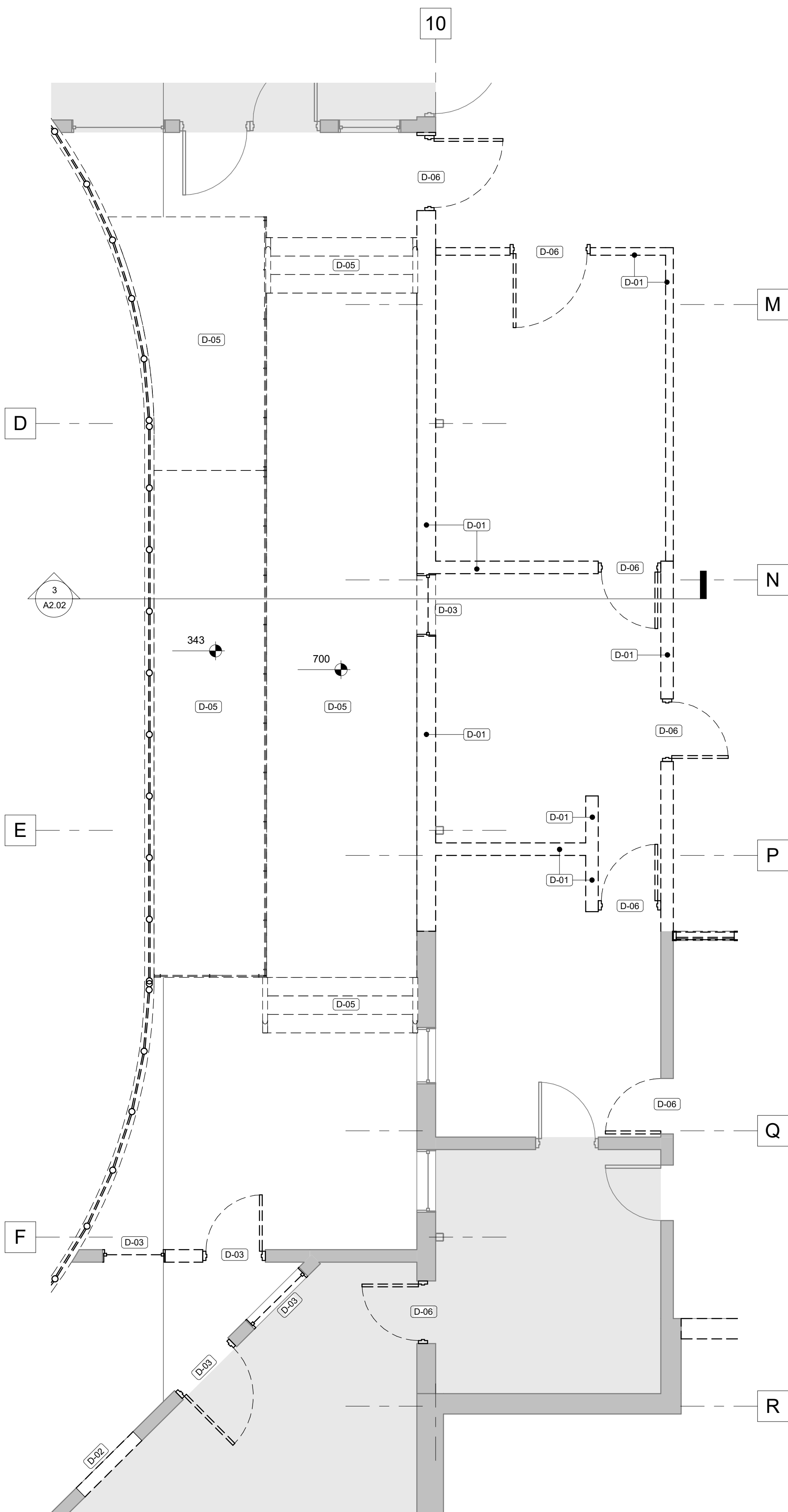


DO NOT SCALE DRAWING. DIMENSIONS ARE TO BE CHECKED AND VERIFIED BY THE CONTRACTOR ON SITE.

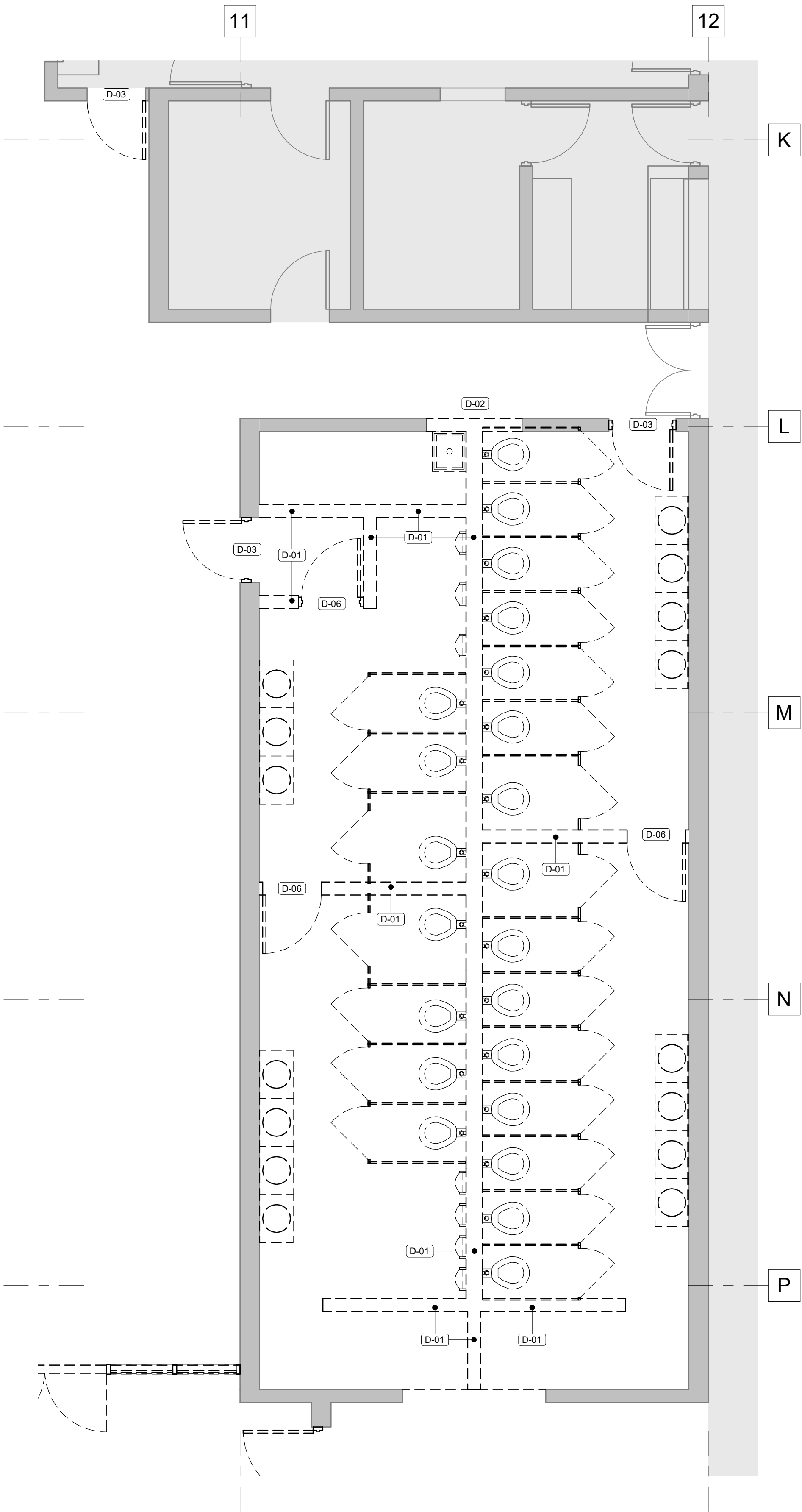
ALL DRAWINGS, SPECIFICATIONS, AND RELATED DOCUMENTS ARE THE COPYRIGHT PROPERTY OF THE ARCHITECT AND MUST BE RETURNED UPON REQUEST. REPRODUCTION OF DRAWINGS, SPECIFICATIONS, AND RELATED DOCUMENTS IN WHOLE OR IN PART IS STRICTLY FORBIDDEN WITHOUT THE ARCHITECT'S WRITTEN PERMISSION.

THIS DRAWING SHALL NOT BE USED FOR CONSTRUCTION PURPOSES UNLESS COUNTERSIGNED BY INVIZIJ ARCHITECTS INC.

PROJECT NAME:
South Huron Recreation Centre Upgrades
PROJECT ADDRESS:
94 Victoria St E, Exeter, ON N0M 1S1
PROJECT NO.:
22012
DRAWING TITLE:
MEZZANINE DEMO PLAN
PLOT DATE:
DRWN:
KB
CHKD:
BP
DATE:
02/15/22
SCALE:
As indicated
DRAWING NO.:
A2.02



ENLARGED ADMIN AND WARMING ROOM DEMO PLAN 2
1 : 50 A2.10



ENLARGED WASHROOM DEMO PLAN 1
1 : 50 A2.10

LEGEND:

- (E) TO DEMOLISH
- (E) WALL TO REMAIN
- (E) DOOR TO DEMOLISH
- (E) DOOR TO REMAIN
- EXTENT OF FLOOR SLAB TO BE DEMOLISHED
- EXTENT OF FLOOR FINISH TO BE DEMOLISHED
- (E) FLOOR TO REMAIN

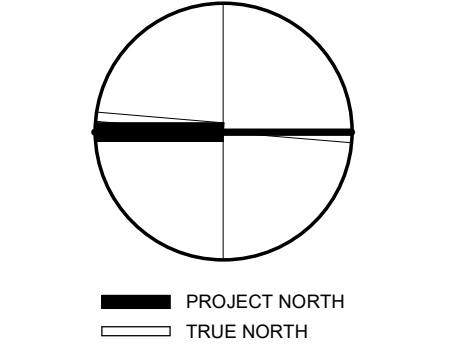
GENERAL NOTES:

- REFER TO STRUCTURAL FOR ASSOCIATED DEMOLITION.
- REFER TO MECHANICAL AND ELECTRICAL FOR ASSOCIATED DEMOLITION. COORDINATE WITH MECHANICAL FOR EXTENT OF CHANGES TO (E) PLUMBING, HEATING, VENTILATION AND SPRINKLER SYSTEMS. COORDINATE WITH ELECTRICAL FOR EXTENT OF CHANGES TO (E) LIGHTING, POWER, FIRE ALARM AND DOOR SECURITY SYSTEMS. (E) FLOOR AND ROOF STRUCTURE TO REMAIN, UNLESS NOTED OTHERWISE.
- WHERE (E) SURFACES ARE DISTURBED DUE TO DEMOLITION OR ALTERATIONS AND NOT REQUIRED TO BE COVERED WITH NEW FINISHES, SUCH SURFACES SHALL BE PATCHED, REPAIRED AND MADE GOOD TO MATCH (E) ADJACENT MATERIALS AND FINISHES.
- PATCH, REPAIR AND MAKE GOOD ALL MATERIALS AND FINISHES WHERE DISTURBED BY DEMOLITION AND ALTERATIONS. REFER TO ALL DOCUMENTS FOR FULL EXTENT OF WORK REQUIRED. NOTE THAT MAKING GOOD INCLUDES WORK ASSOCIATED WITH THE REMOVAL OF (E) AND INSTALLATION OF NEW SERVICES, ETC. (I.E. PLUMBING, HEATING, ELECTRICAL, MODIFICATIONS IN THE (E) BUILDING, INSTALLATION OF NEW DUCTS, CONDUITS, ETC. IN THE (E) BUILDING, ETC.).
- WHERE (E) PARTITIONS / FURRINGS / BUILDING FITMENTS, HOUSEKEEPING PADS, ETC. ARE BEING DEMOLISHED, PATCH, REPAIR AND MAKE GOOD SUBSTRATES TO RECEIVE NEW SPECIFIED MATERIALS AND FINISHES.
- WHERE (E) FLOORING MATERIALS ARE INDICATED IN THE PLANS OR ROOM FINISH SCHEDULE, COMPLETELY DEMOLISH (E) FLOORING TO EXPOSE THE STRUCTURAL FLOOR SLAB. PATCH, REPAIR, FILL HOLES IN SLAB, AND MAKE GOOD (E) FLOOR SLAB TO BE SMOOTH AND LEVEL AND VOID OF WAVES, BUMPS IN MATERIALS / FINISHES, OR DEPRESSIONS. (E) FLOOR SLAB TO ACCEPT NEW SPECIFICATIONS AND FLOOR MANUFACTURERS REQUIREMENTS.
- WHERE NEW CEILING MATERIALS ARE INDICATED ON THE REFLECTED CEILING PLANS OR ROOM FINISH SCHEDULE, COMPLETELY DEMOLISH (E) CEILING SYSTEMS AND BULKHEADS INCLUDING SUSPENSION SYSTEMS AND HANGERS, THEN INSTALL A COMPLETE NEW CEILING SYSTEM, UNLESS OTHERWISE NOTED.
- WHERE (E) MATERIALS AND REQUIRED TO BE SALVAGED FOR REUSE, COMPLETELY CLEAN (E) SURFACES FROM DEMOLISH MATERIALS AND MAKE CLEAN AND READY FOR REINSTALLATION.
- WHERE (E) SERVICES ARE BEING DEMOLISH AND (E) STRUCTURAL SLAB PENETRATIONS ARE EXPOSED, FILL (E) SLAB PENETRATIONS WITH CONCRETE WITH FIRE RATING TO MATCH (E) ADJACENT FLOOR SLAB AND PATCH, REPAIR AND MAKE GOOD (E) FLOOR SLAB TO BE SMOOTH AND LEVEL AND VOID OF WAVES, BUMPS IN MATERIALS/FINISHES, OR DEPRESSIONS. (E) FLOOR SLAB TO ACCEPT NEW SPECIFICATIONS AND FLOOR MANUFACTURERS REQUIREMENTS.
- NOT ALL DEMOLITION IS SHOWN. CONTRACTORS TO SITE VERIFY AND DOCUMENT (E) CONDITIONS AND INCLUDE FOR DEMOLITION OF ALL REDUNDANT NON-ESSENTIAL BUILDING ELEMENTS INCLUDING BUT NOT LIMITED TO ABOVE CEILING FRAMING, REMAINING PLASTER/GWB CEILINGS, LIGHT FIXTURES, MECHANICAL AND ELECTRICAL SYSTEMS, BUILDING FITMENTS AND ACCESSORIES.

DEMOLITION NOTES

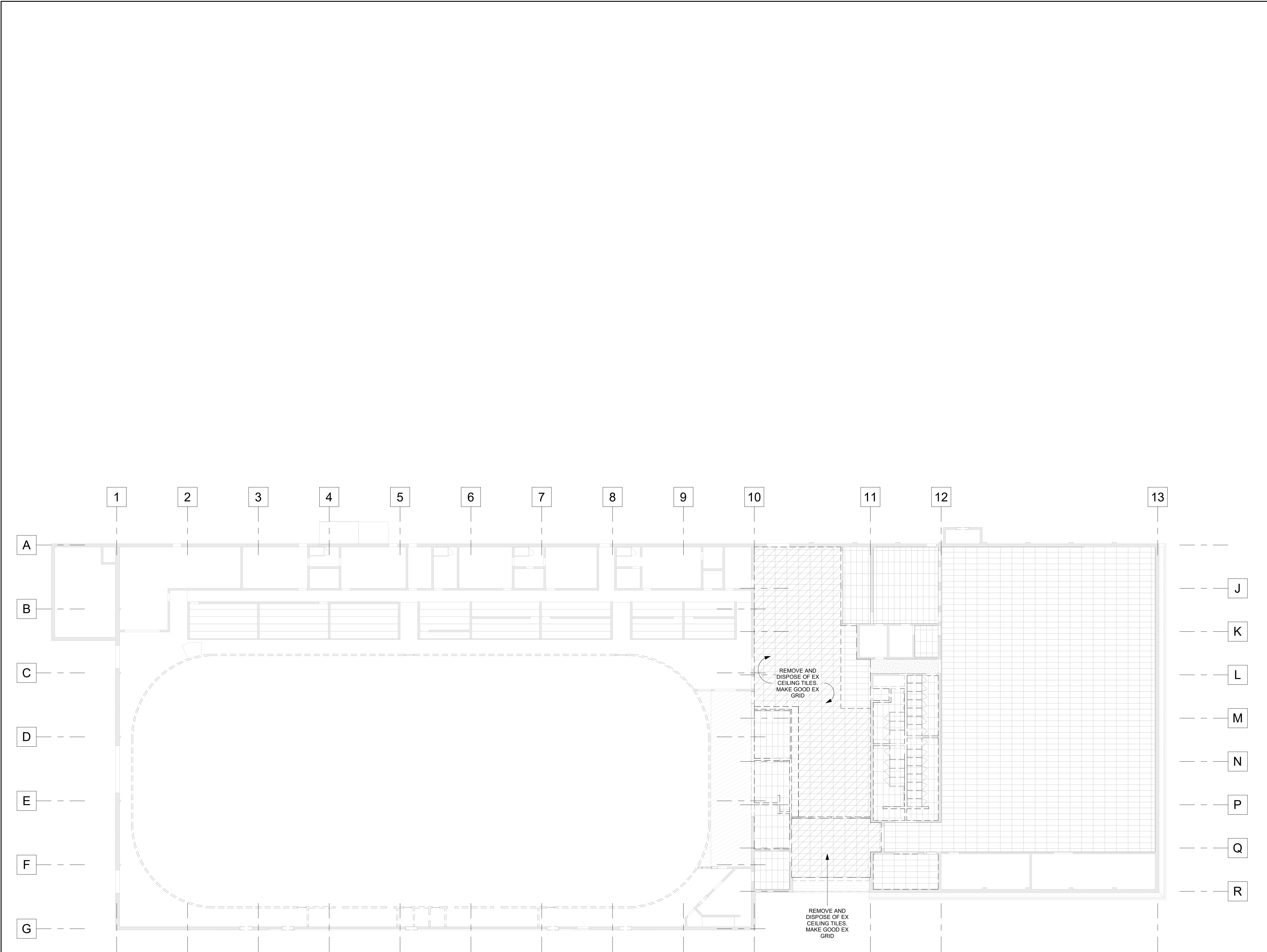
- D-01 (E) WALL TO BE DEMOLISHED (INCLUDING BUT NOT LIMITED TO ALL SERVICES, FITMENTS, ACCESSORIES, ETC.). PATCH, REPAIR AND MAKE GOOD ALL ADJACENT SURFACES TO REMAIN TO ACCEPT NEW CONSTRUCTION AND FINISHES. REFER TO STRUCTURAL FOR DEMOLITION OF LOAD BEARING WALLS.
- D-02 DEMO PORTION OF (E) WALL FOR NEW OPENING. COORDINATE WITH NEW ARCHITECTURAL DRAWINGS & STRUCTURAL FOR LINTEL LOCATIONS.
- D-03 (E) WINDOW/DOOR FRAME AND SILL TO BE DEMOLISHED, INFILL OPENING WITH BLOCK TO MATCH.
- D-04 DEMOLISH (E) FLOOR FINISH TO EXPOSE (E) STRUCTURAL FLOOR SLAB. PATCH, REPAIR AND MAKE GOOD (E) FLOOR SLAB TO BE SMOOTH AND LEVEL AND READY TO RECEIVE NEW FLOOR FINISHES AND/OR TOPPING.
- D-05 (E) STAIRS, RAMP AND LANDING (c/w RAILINGS, ETC.) TO BE DEMOLISHED.
- D-06 (E) DOOR AND/OR WINDOW & FRAME TO BE DEMOLISHED.
- D-07
- D-08
- D-09 DEMOLISH PORTION OF (E) STRUCTURAL FLOOR SLAB TO ACCOMMODATE NEW CONSTRUCTION. REFER TO AND COORDINATE WITH NEW ARCHITECTURAL AND STRUCTURAL.
- D-10 (E) OPENING IN (E) FLOOR SLAB / DECK. MAKE GOOD EDGES TO ACCEPT NEW STRUCTURAL FRAMING AND FLOOR SLAB/DECK INFILL. REFER TO AND COORDINATE WITH STRUCTURAL.
- D-11 (E) STRUCTURAL COLUMN TO REMAIN. REFER TO AND COORDINATE WITH STRUCTURAL.

REV.	DESCRIPTION	DATE
2	Re-Issued for 100% Schematic Design	2022/03/04
1	Issued For 100% Schematic Design	2022/02/28



DO NOT SCALE DRAWING. DIMENSIONS ARE TO BE CHECKED AND VERIFIED BY THE CONTRACTOR ON SITE.
ALL DRAWINGS, SPECIFICATIONS, AND RELATED DOCUMENTS ARE THE COPYRIGHT PROPERTY OF THE ARCHITECT AND MUST BE RETURNED UPON REQUEST. REPRODUCTION OF DRAWINGS, SPECIFICATIONS, AND RELATED DOCUMENTS IN WHOLE OR IN PART IS STRICTLY FORBIDDEN WITHOUT THE ARCHITECT'S WRITTEN PERMISSION.
THIS DRAWING SHALL NOT BE USED FOR CONSTRUCTION PURPOSES UNLESS COUNTERSIGNED BY INVIZIJ ARCHITECTS INC.

PROJECT NAME:	South Huron Recreation Centre Upgrades
PROJECT ADDRESS:	94 Victoria St E, Exeter, ON N0M 1S1
PROJECT NO.:	22012
DRAWING TITLE:	ENLARGED DEMO PLANS
PLOT DATE:	
DRWN:	KB
CHKD:	BP
DATE:	02/14/22
SCALE:	As indicated
DRAWING NO.:	A2.10



DEMO GROUND FLOOR RCP 1
1 : 200 A2.20

LEGEND:

- (E) TO DEMOLISH
- (E) WALL TO REMAIN
- (E) DOOR TO DEMOLISH
- (E) DOOR TO REMAIN
- EXTENT OF FLOOR SLAB TO BE DEMOLISHED
- EXTENT OF FLOOR FINISH TO BE DEMOLISHED
- (E) FLOOR TO REMAIN

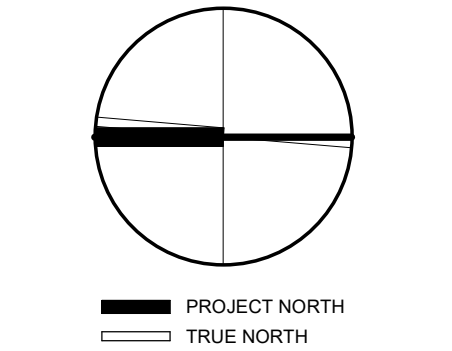
GENERAL NOTES:

- REFER TO STRUCTURAL FOR ASSOCIATED DEMOLITION.
- REFER TO MECHANICAL AND ELECTRICAL FOR ASSOCIATED DEMOLITION. COORDINATE WITH MECHANICAL FOR EXTENT OF CHANGES TO (E) PLUMBING, HEATING, VENTILATION AND SPRINKLER SYSTEMS. COORDINATE WITH ELECTRICAL FOR EXTENT OF CHANGES TO (E) LIGHTING, POWER, FIRE ALARM AND DOOR SECURITY SYSTEMS.
- (E) FLOOR AND ROOF STRUCTURE TO REMAIN, UNLESS NOTED OTHERWISE.
- WHERE (E) SURFACES ARE DISTURBED DUE TO DEMOLITION OR ALTERATIONS AND NOT REQUIRED TO BE COVERED WITH NEW FINISHES, SUCH SURFACES SHALL BE PATCHED, REPAIRED AND MADE GOOD TO MATCH (E) ADJACENT MATERIALS AND FINISHES.
- PATCH, REPAIR AND MAKE GOOD ALL MATERIALS AND FINISHES WHERE DISTURBED BY DEMOLITION AND ALTERATIONS. REFER TO ALL DOCUMENTS FOR FULL EXTENT OF WORK REQUIRED. NOTE THAT MAKING GOOD INCLUDES WORK ASSOCIATED WITH THE REMOVAL OF (E) AND INSTALLATION OF NEW SERVICES, ETC. (I.E. PLUMBING, HEATING, ELECTRICAL MODIFICATIONS IN THE (E) BUILDING, INSTALLATION OF NEW DUCTS, CONDUITS, ETC. IN THE (E) BUILDING ETC.).
- WHERE (E) PARTITIONS / FURNINGS / BUILDING FITMENTS, HOUSEKEEPING PADS, ETC. ARE BEING DEMOLISHED, PATCH, REPAIR AND MAKE GOOD SUBSTRATES TO RECEIVE NEW SPECIFIED MATERIALS AND FINISHES.
- WHERE (E) FLOORING MATERIALS ARE INDICATED IN THE PLANS OR ROOM FINISH SCHEDULE, COMPLETELY DEMOLISH (E) FLOORING TO EXPOSE THE STRUCTURAL FLOOR SLAB. PATCH, REPAIR, FILL HOLES IN SLAB, AND MAKE GOOD (E) FLOOR SLAB TO BE SMOOTH AND LEVEL AND VOID OF WAVES, BUMPS IN MATERIALS / FINISHES, OR DEPRESSIONS. (E) FLOOR SLAB TO ACCEPT NEW SPECIFICATIONS AND FLOOR MANUFACTURERS REQUIREMENTS.
- WHERE NEW CEILING MATERIALS ARE INDICATED ON THE REFLECTED CEILING PLANS OR ROOM FINISH SCHEDULE, COMPLETELY DEMOLISH (E) CEILING SYSTEMS AND BULKHEADS INCLUDING SUSPENSION SYSTEMS AND HANGERS, THEN INSTALL A COMPLETE NEW CEILING SYSTEM, UNLESS OTHERWISE NOTED.
- WHERE (E) MATERIALS AND REQUIRED TO BE SALVAGED FOR REUSE, COMPLETELY CLEAN (E) SURFACES FROM DEMOLISH MATERIALS AND MAKE CLEAN AND READY FOR REINSTALLATION.
- WHERE (E) SERVICES ARE BEING DEMOLISH AND (E) STRUCTURAL SLAB PENETRATIONS ARE EXPOSED, FILL (E) SLAB PENETRATIONS WITH CONCRETE WITH FIRE RATING TO MATCH (E) ADJACENT FLOOR SLAB AND PATCH, REPAIR AND MAKE GOOD (E) FLOOR SLAB TO BE SMOOTH AND LEVEL AND VOID OF WAVES, BUMPS IN MATERIALS / FINISHES, OR DEPRESSIONS. (E) FLOOR SLAB TO ACCEPT NEW SPECIFICATIONS AND FLOOR MANUFACTURERS REQUIREMENTS.
- NOT ALL DEMOLITION IS SHOWN. CONTRACTORS TO SITE VERIFY AND DOCUMENT (E) CONDITIONS AND INCLUDE FOR DEMOLITION OF ALL REDUNDANT NON-ESSENTIAL BUILDING ELEMENTS INCLUDING BUT NOT LIMITED TO ABOVE CEILING FRAMING, REMAINING PLASTER/GWS CEILINGS, LIGHT FIXTURES, MECHANICAL AND ELECTRICAL SYSTEMS, BUILDING FITMENTS AND ACCESSORIES.

DEMOLITION NOTES

- (D-01) (E) WALL TO BE DEMOLISHED (INCLUDING BUT NOT LIMITED TO ALL SERVICES, FITMENTS, ACCESSORIES, ETC.). PATCH, REPAIR AND MAKE GOOD ALL ADJACENT SURFACES TO REMAIN TO ACCEPT NEW CONSTRUCTION AND FINISHES. REFER TO STRUCTURAL FOR DEMOLITION OF LOAD BEARING WALLS.
- (D-02) DEMO PORTION OF (E) WALL FOR NEW OPENING COORDINATE WITH NEW ARCHITECTURAL DRAWINGS & STRUCTURAL FOR LINTEL LOCATIONS.
- (D-03) (E) WINDOW/DOOR FRAME AND SILL TO BE DEMOLISHED. INFILL OPENING WITH BLOCK TO MATCH.
- (D-04) DEMOLISH (E) FLOOR FINISH TO EXPOSE (E) STRUCTURAL FLOOR SLAB. PATCH, REPAIR AND MAKE GOOD (E) FLOOR SLAB TO BE SMOOTH AND LEVEL AND READY TO RECEIVE NEW FLOOR FINISHES AND/OR TOPPING.
- (D-05) (E) STAIRS, RAMP AND LANDING (c/w RAILINGS, ETC.) TO BE DEMOLISHED.
- (D-06) (E) DOOR AND/OR WINDOW & FRAME TO BE DEMOLISHED.
- (D-07)
- (D-08)
- (D-09) DEMOLISH PORTION OF (E) STRUCTURAL FLOOR SLAB TO ACCOMMODATE NEW CONSTRUCTION. REFER TO AND COORDINATE WITH NEW ARCHITECTURAL AND STRUCTURAL.
- (D-10) (E) OPENING IN (E) FLOOR SLAB / DECK. MAKE GOOD EDGES TO ACCEPT NEW STRUCTURAL FRAMING AND FLOOR SLAB/DECK INFILL. REFER TO AND COORDINATE WITH STRUCTURAL.
- (D-11) (E) STRUCTURAL COLUMN TO REMAIN. REFER TO AND COORDINATE WITH STRUCTURAL.

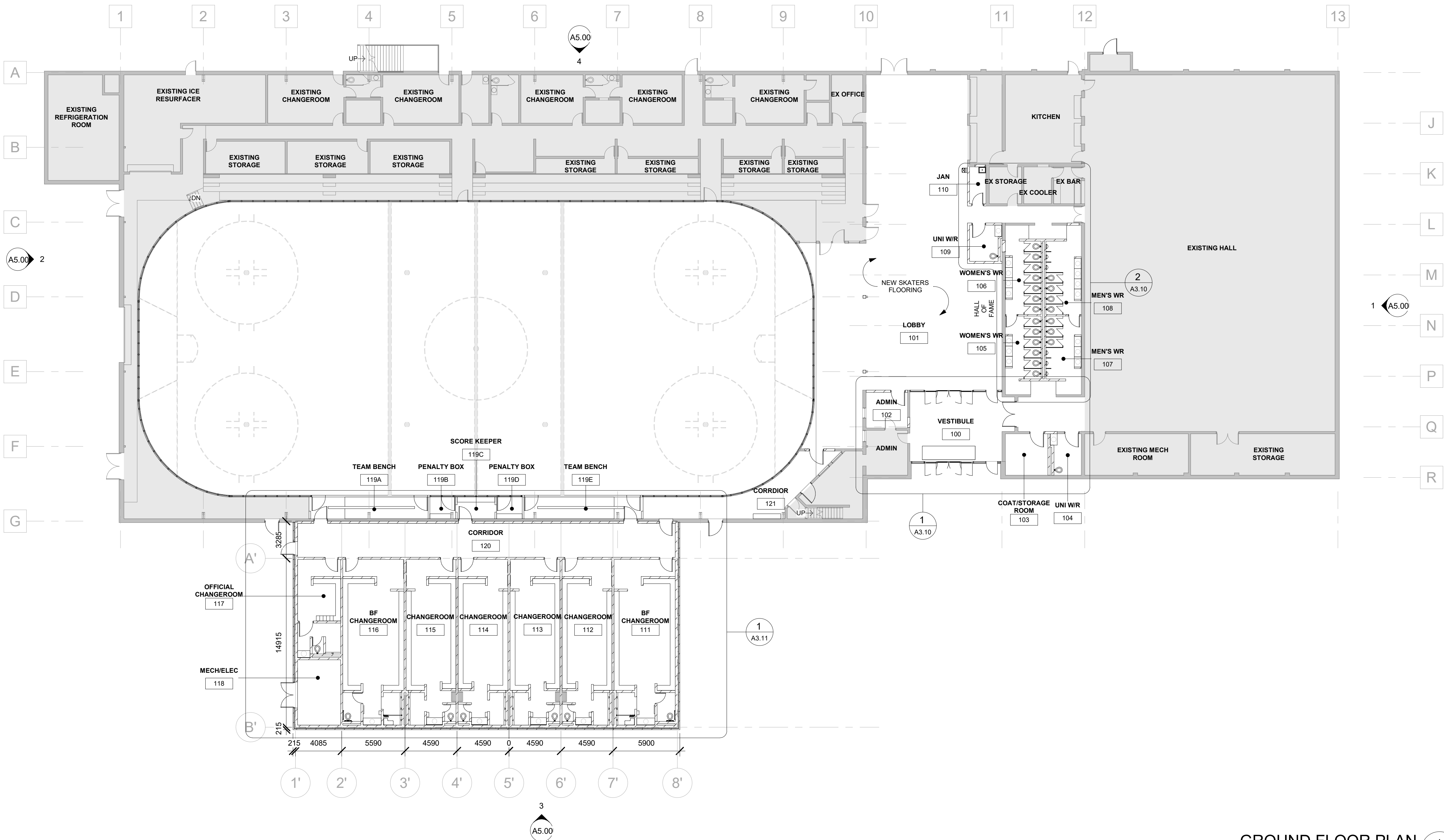
REV.	DESCRIPTION	DATE
2	Re-Issued for 100% Schematic Design	2022/03/04
1	Issued For 100% Schematic Design	2022/02/28



DO NOT SCALE DRAWING. DIMENSIONS ARE TO BE CHECKED AND VERIFIED BY THE CONTRACTOR ON SITE.
ALL DRAWINGS, SPECIFICATIONS, AND RELATED DOCUMENTS ARE THE COPYRIGHT PROPERTY OF THE ARCHITECT AND MUST BE RETURNED UPON REQUEST. REPRODUCTION OF DRAWINGS, SPECIFICATIONS, AND RELATED DOCUMENTS IN WHOLE OR IN PART IS STRICTLY FORBIDDEN WITHOUT THE ARCHITECT'S WRITTEN PERMISSION.

THIS DRAWING SHALL NOT BE USED FOR CONSTRUCTION PURPOSES UNLESS COUNTERSIGNED BY INVIZIJ ARCHITECTS INC.

PROJECT NAME:
South Huron Recreation Centre Upgrades
PROJECT ADDRESS:
94 Victoria St E, Exeter, ON N0M 1S1
PROJECT NO.:
22012
DRAWING TITLE:
DEMO REFLECTED CEILING PLANS
PLOT DATE:
DRWN:
KB
CHKD:
BP
DATE:
02/22/22
SCALE:
As indicated
DRAWING NO.:
A2.20



GENERAL NOTES:

- FIRE RATED WALLS ASSEMBLIES ARE TO BE CONSTRUCTED AS CONTINUOUS FIRE SEPARATION AND TO BE TERMINATED AT INTERSECTION WITH ANOTHER FIRE SEPARATION OR RATED MATERIAL. ALL PENETRATIONS TO BE SEALED W/FIRE STOP SEALANT AS REQUIRED.
- REFER TO LIFE SAFETY DRAWINGS FOR LOCATION OF FIRE SEPARATIONS. ALL OPENINGS WITHIN A RATED ASSEMBLY ARE TO BE RATED OR PROTECTED OPENINGS.

NOTES

- C-02 REFER TO DRAWING A0.2 FOR FIRE RESISTANT RATED ENCLOSURES FOR STEEL COLUMNS
- C-03 SURFACE MOUNTED FIRE EXTINGUISHER.
- C-04 RECESSED ELECTRICAL PANEL. REFER TO ELECTRICAL
- C-05 FIRE ALARM ANNUNCIATOR PANEL. REFER TO ELEC.
- C-06 FIRE DEPT. SIAMESE CONNECTION
- C-33 SLOPED CEILING ABOVE.
- C-34 ROOF ACCESS HATCH AND LADDER C/W EXTENDABLE "LADDER UP" SAFETY POST.

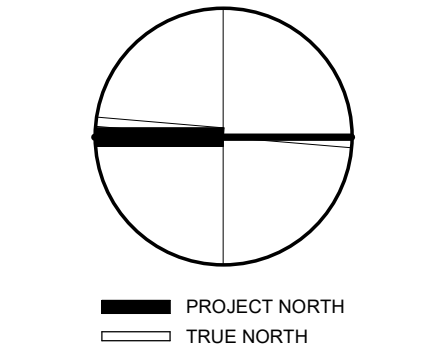
- C-12 ROOF DRAIN. REFER TO MECH DWG.
- C-13 ROOF CRICKET
- C-14 ROOF SCUPPER
- C-15 ROOF WALKWAY. DIFFERENT COLOURED CAP SHEET TO BE USED TO DISTINGUISH WALKWAY FROM ROOF.
- C-16 INSULATED ROOF ACCESS HATCH. SIZE 1220X1220
- C-17 T/O ELEVATOR SHAFT.
- C-18 WASHERS AND DRYERS SUPPLIED & INSTALLED BY OWNER

- C-21 AUTOMATIC DOOR OPERATOR
- C-22 RAIN WATER LEADER. COLOUR TO SELECTED BY CONSULTANT FROM MANUFACTURER'S STANDARD RANGE. REFER TO MECH. DRAWINGS

- C-25 FOOT GRILLE

- C-28 SHELF & SST ROD.

REV.	DESCRIPTION	DATE
2	Re-Issued for 100% Schematic Design	2022/03/04
1	Issued For 100% Schematic Design	2022/02/28

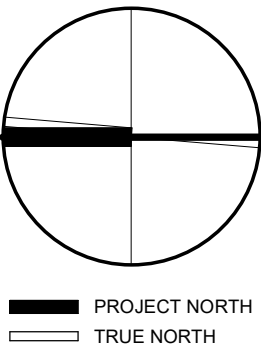


DO NOT SCALE DRAWING. DIMENSIONS ARE TO BE CHECKED AND VERIFIED BY THE CONTRACTOR ON SITE.
ALL DRAWINGS, SPECIFICATIONS, AND RELATED DOCUMENTS ARE THE COPYRIGHT PROPERTY OF THE ARCHITECT AND MUST BE RETURNED UPON REQUEST. REPRODUCTION OF DRAWINGS, SPECIFICATIONS, AND RELATED DOCUMENTS IN WHOLE OR IN PART IS STRICTLY FORBIDDEN WITHOUT THE ARCHITECT'S WRITTEN PERMISSION.
THIS DRAWING SHALL NOT BE USED FOR CONSTRUCTION PURPOSES UNLESS COUNTERSIGNED BY INVIZIJ ARCHITECTS INC.

PROJECT NAME:	South Huron Recreation Centre Upgrades
PROJECT ADDRESS:	94 Victoria St E, Exeter, ON N0M 1S1
PROJECT NO.:	22012
DRAWING TITLE:	GROUND FLOOR PLAN
PLOT DATE:	
DRWN:	KB
CHKD:	BP
DATE:	01/13/22
SCALE:	As indicated
DRAWING NO.:	A3.01



REV.	DESCRIPTION	DATE
2	Re-Issued for 100% Schematic Design	2022/03/04
1	Issued For 100% Schematic Design	2022/02/28
REV.	DESCRIPTION	DATE



DO NOT SCALE DRAWING. DIMENSIONS ARE TO BE CHECKED AND VERIFIED BY THE CONTRACTOR ON SITE.

ALL DRAWINGS, SPECIFICATIONS AND RELATED DOCUMENTS ARE THE COPYRIGHT PROPERTY OF THE ARCHITECT AND MUST BE RETURNED UPON REQUEST. REPRODUCTION OF DRAWINGS, SPECIFICATIONS, AND RELATED DOCUMENTS IN WHOLE OR IN PART IS STRICTLY FORBIDDEN WITHOUT THE ARCHITECT'S WRITTEN PERMISSION.

THIS DRAWING SHALL NOT BE USED FOR CONSTRUCTION PURPOSES UNLESS COUNTERSIGNED BY INVIZIJ ARCHITECTS INC.

PROJECT NAME:	South Huron Recreation Centre Upgrades
PROJECT ADDRESS:	94 Victoria St E, Exeter, ON N0M 1S1
PROJECT NO.:	22012
DRAWING TITLE:	MEZZANINE AND ROOF PLAN
PLOT DATE:	
DRWN:	KB
CHKD:	BP
DATE:	02/15/22
SCALE:	As indicated
DRAWING NO.:	A3.02

GENERAL NOTES:

- FIRE RATED WALLS ASSEMBLIES ARE TO BE CONSTRUCTED AS CONTINUOUS FIRE SEPARATION AND TO BE TERMINATED AT INTERSECTION WITH ANOTHER FIRE SEPARATION OR RATED MATERIAL. ALL PENETRATIONS TO BE SEALED W/FIRE STOP SEALANT AS REQUIRED.
- REFER TO LIFE SAFETY DRAWINGS FOR LOCATION OF FIRE SEPARATIONS. ALL OPENINGS WITHIN A RATED ASSEMBLY ARE TO BE RATED OR PROTECTED OPENINGS.

NOTES

- C-02
- REFER TO DRAWING A0.2 FOR FIRE RESISTANT RATED ENCLOSURES FOR STEEL COLUMNS

C-03

C-04

C-05

C-06

C-33

C-34

C-12

C-13

C-14

C-15

C-16

C-17

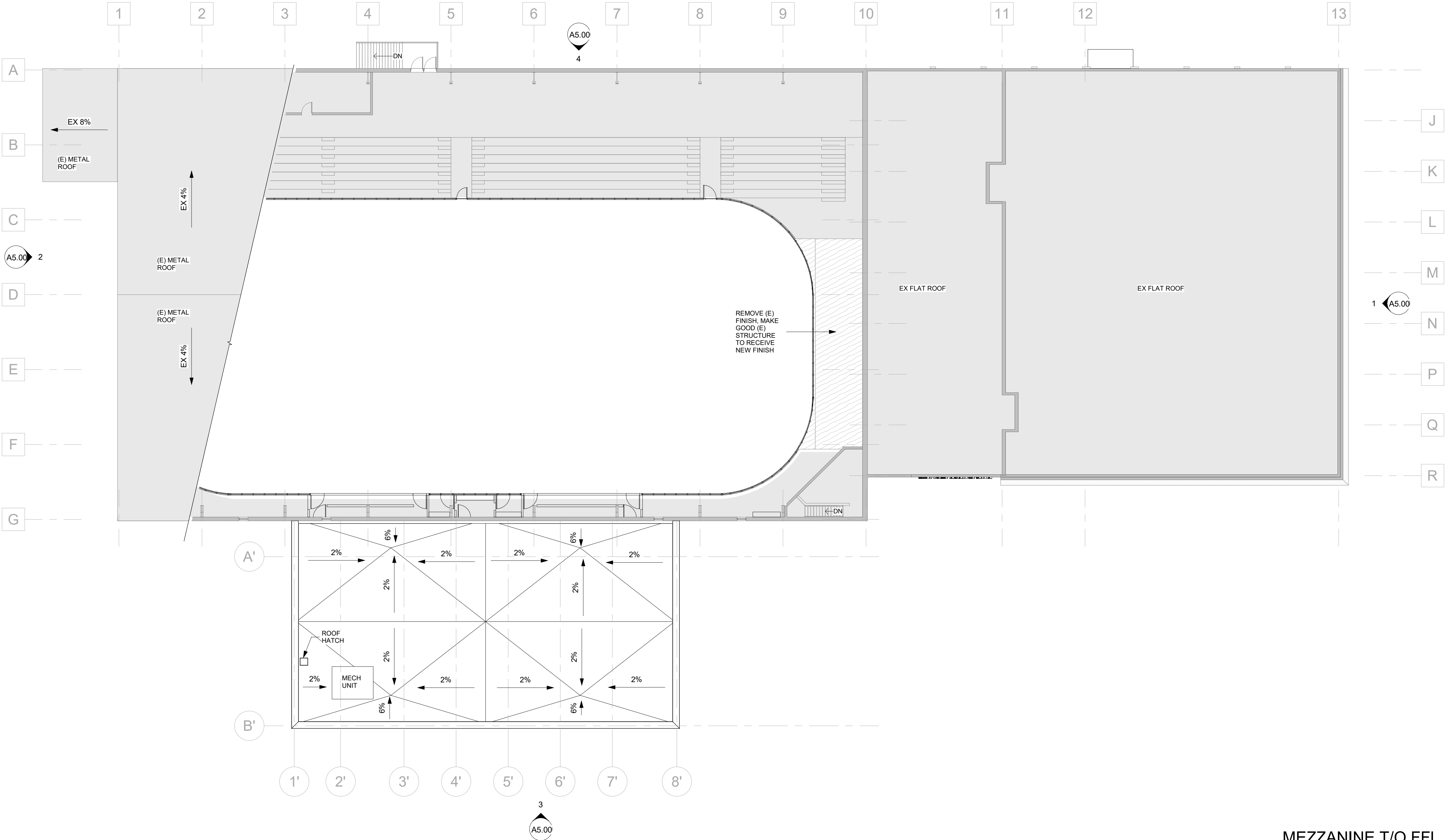
C-18

C-21

C-22

C-25

C-28



MEZZANINE T/O FFL 1
1 : 200 A3.02



PROJECT NAME:

South Huron Recreation
Centre Upgrades

PROJECT NO.: 22012

PLOT DATE: _____

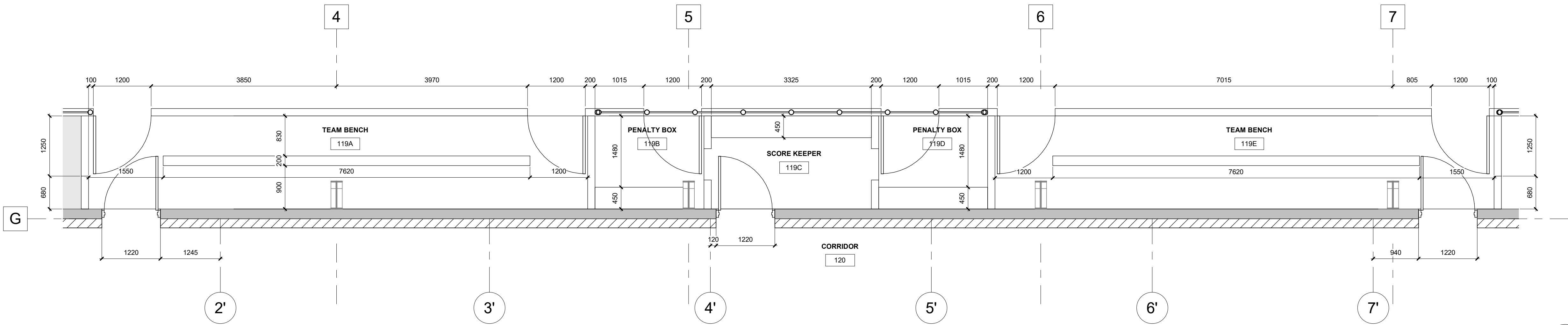
DATE:	02/09/22
-------	----------

SCALE: As indicated

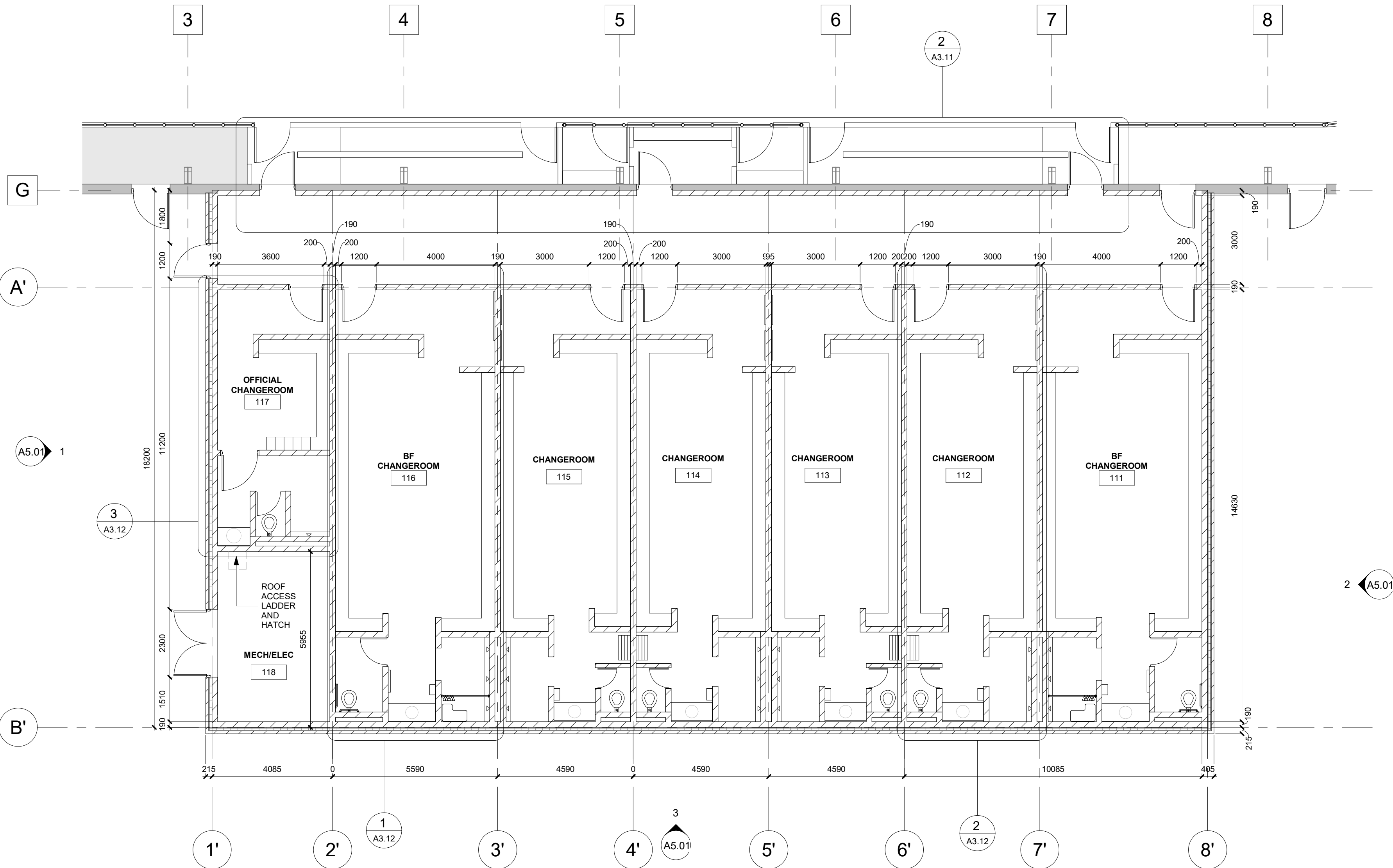
DRAWING NO.:

A3.10





ENLARGED PLAYERS BENCHES AND PENALTY BOX 2
1 : 50 A3.11



ADDITION ENLARGED FLOOR PLAN 1
1 : 100 A3.11

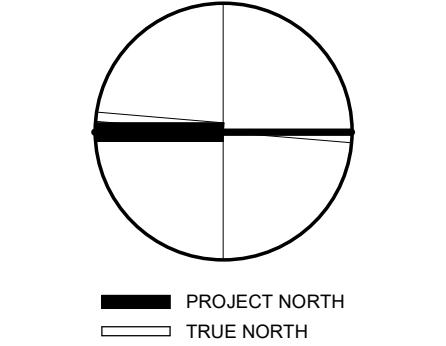
GENERAL NOTES:

- FIRE RATED WALLS ASSEMBLIES ARE TO BE CONSTRUCTED AS CONTINUOUS FIRE SEPARATION AND TO BE TERMINATED AT INTERSECTION WITH ANOTHER FIRE SEPARATION OR RATED MATERIAL. ALL PENETRATIONS TO BE SEALED W/FIRE STOP SEALANT AS REQUIRED.
- REFER TO LIFE SAFETY DRAWINGS FOR LOCATION OF FIRE SEPARATIONS. ALL OPENINGS WITHIN A RATED ASSEMBLY ARE TO BE RATED OR PROTECTED OPENINGS.

NOTES

- C-02 REFER TO DRAWING A0.2 FOR FIRE RESISTANT RATED ENCLOSURES FOR STEEL COLUMNS
- C-03 SURFACE MOUNTED FIRE EXTINGUISHER.
- C-04 RECESSED ELECTRICAL PANEL REFER TO ELECTRICAL
- C-05 FIRE ALARM ANNUNCIATOR PANEL. REFER TO ELEC.
- C-06 FIRE DEPT. SIAMESE CONNECTION
- C-33 SLOPED CEILING ABOVE.
- C-34 ROOF ACCESS HATCH AND LADDER CW EXTENDABLE "LADDER UP" SAFETY POST.
- C-12 ROOF DRAIN. REFER TO MECH DWG.
- C-13 ROOF CRICKET
- C-14 ROOF SCUPPER
- C-15 ROOF WALKWAY. DIFFERENT COLOURED CAP SHEET TO BE USED TO DISTINGUISH WALKWAY FROM ROOF.
- C-16 INSULATED ROOF ACCESS HATCH. SIZE 1220x1220
- C-17 T/O ELEVATOR SHAFT.
- C-18 WASHERS AND DRYERS SUPPLIED & INSTALLED BY OWNER
- C-21 AUTOMATIC DOOR OPERATOR
- C-22 RAIN WATER LEADER. COLOUR TO SELECTED BY CONSULTANT FROM MANUFACTURER'S STANDARD RANGE. REFER TO MECH. DRAWINGS
- C-25 FOOT GRILLE
- C-28 SHELF & SST ROD.

REV.	DESCRIPTION	DATE
1	Re-Issued for 100% Schematic Design	2022/03/04



DO NOT SCALE DRAWING. DIMENSIONS ARE TO BE CHECKED AND VERIFIED BY THE CONTRACTOR ON SITE.
ALL DRAWINGS, SPECIFICATIONS, AND RELATED DOCUMENTS ARE THE COPYRIGHT PROPERTY OF THE ARCHITECT, AND MUST BE RETURNED UPON REQUEST. REPRODUCTION OF DRAWINGS, SPECIFICATIONS, AND RELATED DOCUMENTS IN WHOLE OR IN PART IS STRICTLY FORBIDDEN WITHOUT THE ARCHITECT'S WRITTEN PERMISSION.
THIS DRAWING SHALL NOT BE USED FOR CONSTRUCTION PURPOSES UNLESS COUNTERSIGNED BY INVIZIJ ARCHITECTS INC.

PROJECT NAME:
South Huron Recreation Centre Upgrades

PROJECT ADDRESS:
94 Victoria St E, Exeter, ON N0M 1S1

PROJECT NO.:
22012

DRAWING TITLE:
ENLARGED FLOOR PLANS

PLOT DATE:

DRWN: KB

CHKD: BP

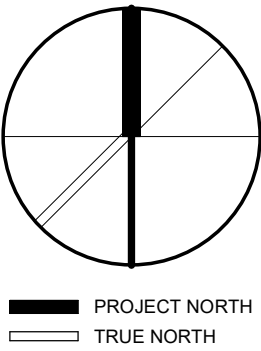
DATE: 02/08/22

SCALE: As indicated

DRAWING NO.:
A3.11



REV.	DESCRIPTION	DATE
2	Re-Issued for 100% Schematic Design	2022/03/04
1	Issued For 100% Schematic Design	2022/02/28



DO NOT SCALE DRAWING. DIMENSIONS ARE TO BE CHECKED AND VERIFIED BY THE CONTRACTOR ON SITE.
ALL DRAWINGS, SPECIFICATIONS, AND RELATED DOCUMENTS ARE THE COPYRIGHT PROPERTY OF THE ARCHITECT, AND MUST BE RETURNED UPON REQUEST. REPRODUCTION OF DRAWINGS, SPECIFICATIONS, AND RELATED DOCUMENTS IN WHOLE OR IN PART IS STRICTLY FORBIDDEN WITHOUT THE ARCHITECT'S WRITTEN PERMISSION.
THIS DRAWING SHALL NOT BE USED FOR CONSTRUCTION PURPOSES UNLESS COUNTERSIGNED BY INVIZIJ ARCHITECTS INC.

PROJECT NAME:	South Huron Recreation Centre Upgrades
PROJECT ADDRESS:	94 Victoria St E, Exeter, ON N0M 1S1
PROJECT NO.:	22012
DRAWING TITLE:	GROUND LEVEL REFLECTED CEILING PLAN
PLOT DATE:	
DRWN:	KB
CHKD:	BP
DATE:	01/13/22
SCALE:	As indicated
DRAWING NO.:	A4.01

RCP NOTES

- CP-01
- GWB MEMBRANE CEILING. 4 LAYERS OF 18 TYPE X GWB ON STEEL FRAMING. AS PER SB 2.2.3.12. NO PENETRATIONS OF GWB MEMBRANE CEILING ARE PERMITTED
- CP-02
- GWB BULKHEAD TO CONCEAL MECHANICAL DUCTWORK, PLUMBING SEE MECH.
- CP-03
- PREFINISHED SHOWER OR BATHTUB STALL
- CP-04
- EXPOSED DUCTWORK TO BE PAINTED UNLESS OTHERWISE NOTED
- CP-05
- MECHANICAL UNIT IN CEILING VOID. PROVIDE ACCESS FOR MAINTENANCE
- CP-06
- 800x1700 CEILING ACCESS PANEL
- CP-07
- CONT. 16 "Z" GWB REVEAL TRIM. PAINTED
- CP-08
- SHAFT

MATERIALS

- GYPSUM WALL BOARD
CEILING TYPE C2
- SUSPENDED ACOUSTIC
CEILING TYPE C1

RCP SYMBOLS

-REFER TO ELECTRICAL DOCUMENTS

- 610X1220 RECESSED LIGHT FIXTURE
- SUSPENDED LIGHT FIXTURE
- SURFACE MOUNTED LIGHT FIXTURE
- SURFACE MOUNTED LIGHT FIXTURE
- TRACK LIGHT
- ROUND, SURFACE MOUNTED LED LIGHT
FIXTURE, WHITE TRIM
- SUSPENDED DRUM LIGHT,
WHITE 900mm
- LED WALL LIGHT FIXTURE
- LED VANITY LIGHT FIXTURE
CENTERED ON SINK, TYP
- EXTERIOR WALL LIGHT FIXTURE
- CEILING FAN WITH
LIGHT
- EXHAUST
- EXPOSED DUCTWORK
PAINTED TO MATCH
CEILING COLOUR
- MECHANICAL DIFFUSERS-
SUPPLY AIR COLOUR TO
MATCH CEILING/WALL COLOUR
- MECHANICAL DIFFUSERS-
RETURN AIR COLOUR TO
MATCH CEILING/WALL
COLOUR.
- RECESSED CEILING
HEATER
- SPRINKLER HEADS
- EXIT SIGN
- EXIT SIGN -
DIRECTIONAL
- ACCESS PANEL TO ACCESS FIRE
DAMPERS, BALANCING DAMPERS,
CLEANOUTS, MECHANICAL UNITS ETC.
ACCESS PANEL FRAME TO BE
CONCEALED PROVIDE FIRE RATED
CEILINGS. SIZE 300x300 UNLESS
OTHERWISE NOTED.

RCP GENERAL NOTES:

1.
- ALL SUSPENDED GWB CEILINGS TO BE TYPE C2. UNO. REFER TO DWG A0.1. WATER RESISTANT GYPSUM WALLBOARD TO BE USED IN WASHROOMS.
2.
- CEILING ACCESS PANELS TO BE PROVIDED TO ALL SERVICES REQUIRING ACCESS SUCH AS FIRE DAMPERS, BALANCING DAMPERS, SHUT-OFF VALVES, ETC.
3.
- ACCESS PANELS TO BE ALIGNED WITH OTHER CEILING FIXTURES, DIFFUSERS, AND DEVICES. CONTRACTOR TO SITE VERIFY LOCATIONS AND REPORT ANY DISCREPANCIES TO THE CONSULTANT. COLOUR OF ACCESS PANEL TO MATCH CEILING COLOUR FINISH.
4.
- ALL LIGHT FIXTURES, DIFFUSERS, ETC. TO BE PLACED IN THE CENTER OF TILE UNLESS OTHERWISE NOTED.
5.
- ALL EXIT SIGNS TO BE CENTERED OVER DOOR UNLESS OTHERWISE NOTED, COORDINATE LOCATIONS WITH FLOOR PLANS.
6.
- DRAWING TO BE READ IN CONJUNCTION WITH MECHANICAL AND ELECTRICAL DOCUMENTS REFER TO A4.1, A4.3-A4.5 DWGS FOR ENLARGED RCP IN UNITS.

GROUND FLOOR RCP

1

1 : 200

A4.01



185 YOUNG STREET,
AMILTON, ON L89 1V9
905 525 9000 | invizij.com

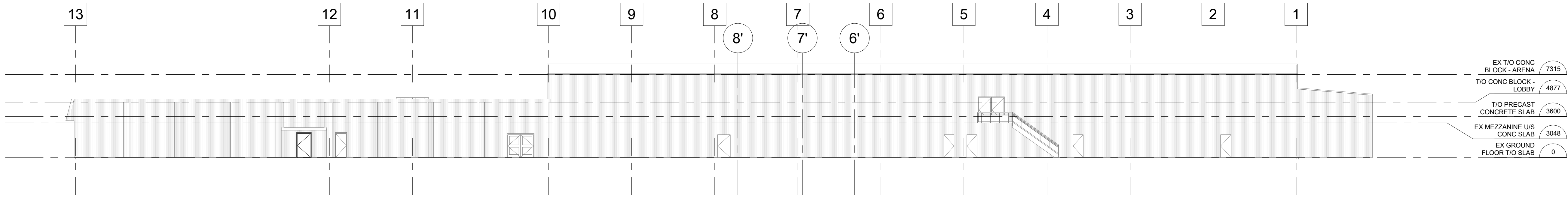
[illegible]

DO NOT SCALE DRAWING. DIMENSIONS ARE TO BE CHECKED AND VERIFIED BY THE CONTRACTOR ON SITE.

ALL DRAWINGS, SPECIFICATIONS, AND RELATED DOCUMENTS ARE THE COPYRIGHT PROPERTY OF THE ARCHITECT AND MUST BE RETURNED UPON REQUEST. REPRODUCTION OF DRAWINGS, SPECIFICATIONS, AND RELATED DOCUMENTS IN WHOLE OR IN PART IS STRICTLY FORBIDDEN WITHOUT THE ARCHITECT'S WRITTEN PERMISSION.

THIS DRAWING SHALL NOT BE USED FOR CONSTRUCTION PURPOSES UNLESS COUNTERSIGNED BY INVZU ARCHITECTS INC.

PROJECT NAME: South Huron Recreation Centre Upgrades	
PROJECT ADDRESS: 94 Victoria St E, Exeter, ON N0M 1S1	
PROJECT NO.:	22012
DRAWING TITLE: OVERALL BUILDING ELEVATIONS	
PLOT DATE:	
DRWN:	KB
CHKD:	BP
DATE:	02/14/22
SCALE:	1 : 200
DRAWING NO.:	
A5.00	

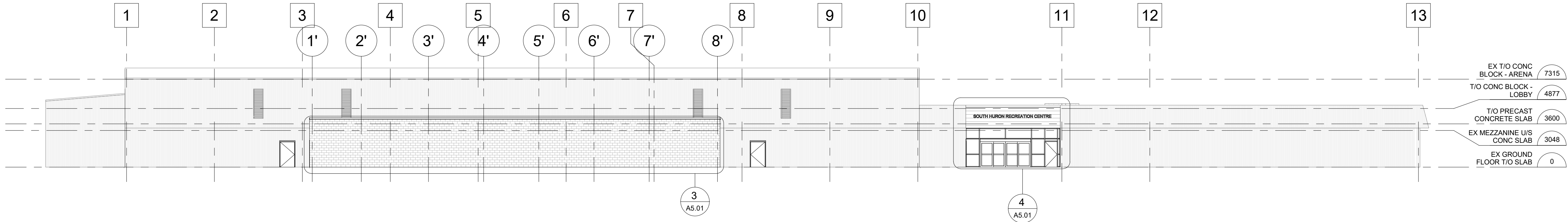


EAST ELEVATION

1 : 200

4

A5.00

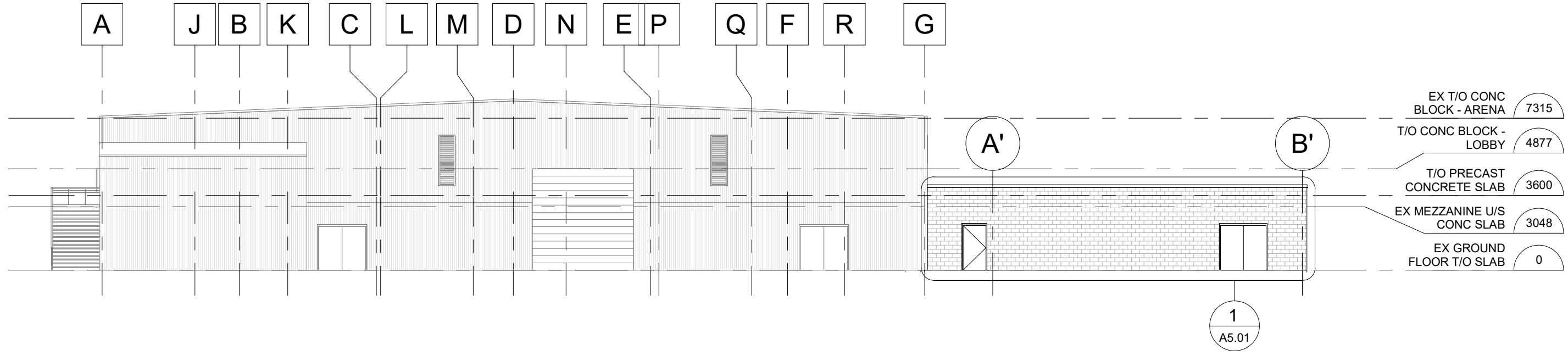


WEST ELEVATION

1 : 200

3

A5.00

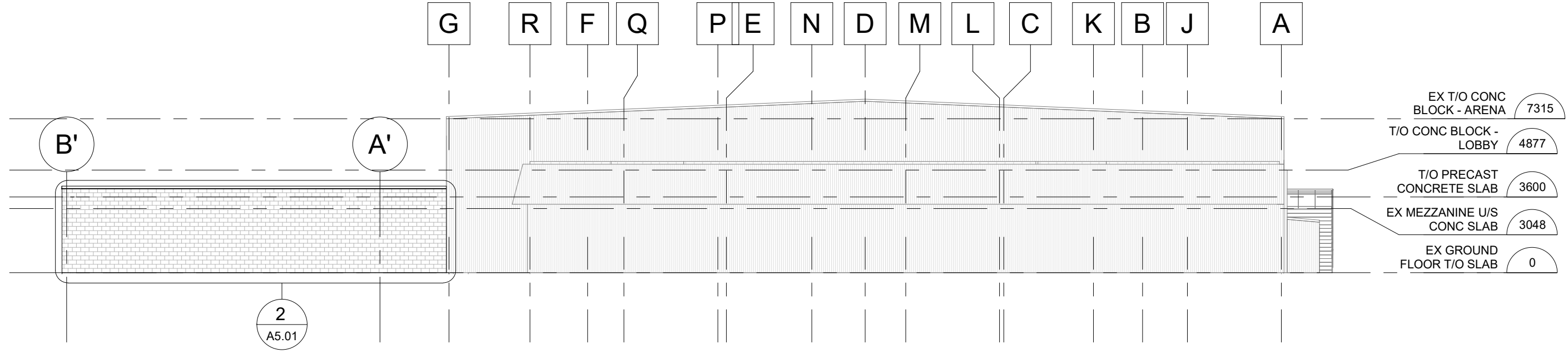


NORTH ELEVATION

1 : 200

2

A5.00



SOUTH ELEVATION

1 : 200

1
A5.00

REV.	DESCRIPTION	DATE
2	Re-Issued for 100% Schematic Design	2022/03/04
1	Issued For 100% Schematic Design	2022/02/28

DO NOT SCALE DRAWING. DIMENSIONS ARE TO BE CHECKED AND VERIFIED BY THE CONTRACTOR ON SITE.

ALL DRAWINGS, SPECIFICATIONS, AND RELATED DOCUMENTS ARE THE COPYRIGHT PROPERTY OF THE ARCHITECT, AND MUST BE RETURNED UPON REQUEST. REPRODUCTION OF DRAWINGS, SPECIFICATIONS, AND RELATED DOCUMENTS IN WHOLE OR IN PART IS STRICTLY FORBIDDEN WITHOUT THE ARCHITECT'S WRITTEN PERMISSION.

THIS DRAWING SHALL NOT BE USED FOR CONSTRUCTION PURPOSES UNLESS COUNTERSIGNED BY INVIZIJ ARCHITECTS INC.

PROJECT NAME:	South Huron Recreation Centre Upgrades
PROJECT ADDRESS:	94 Victoria St E, Exeter, ON N0M 1S1
PROJECT NO.:	22012
DRAWING TITLE:	ENLARGED BUILDING ELEVATIONS
PLOT DATE:	
DRWN:	KB
CHKD:	BP
DATE:	01/13/22
SCALE:	As indicated
DRAWING NO.:	A5.01

- NOTES
- EL-01

EXISTING BRICK, COLOUR RED
- EL-02

PROPOSED NEW BRICK, COLOUR RED, TO MATCH EXISTING.
- EL-03

BUFF BRICK (RED COLOUR)
- EL-04

EIFS CORNICE
- EL-05

LIMESTONE BAND
- EL-06

EXISTING SOLDIER COURSE BRICK BAND
- EL-07

PRECAST CONCRETE SILL, TYP.
- EL-08

POLISHED CONCRETE BLOCK
- EL-09

OPERABLE/FIXED TRIPLE GLAZED WINDOW. TYP. REFER TO SCHEDULE. COLOUR CHARCOAL
- EL-10

PREFINISHED FIXED THERMALLY BROKEN ALUMINUM WINDOW, C/W DOUBLE GLAZED UNIT, COLOUR CHARCOAL
- EL-11

PREFINISHED THERMALLY BROKEN ALUMINUM DOOR & FRAME C/W DOUBLE GLAZED INSULATED UNIT, COLOUR CHARCOAL.
- EL-12

INSULATED HOLLOW METAL DOOR & THERMALLY BROKEN FRAME, COLOUR CHARCOAL
- EL-13

PREFINISHED THERMALLY BROKEN ALUMINUM OVERHEAD DOOR C/W INSULATED GLASS PANELS
- EL-14

CANOPY
- EL-15

SIGNAGE
- EL-16

MECHANICAL EQUIPMENT
- EL-17

STEEL PICKET GUARDRAIL (CHARCOAL)
- EL-18

WOOD GUARDRAIL (PTD WHITE)
- EL-19

WOOD PRIVACY FENCE, REFER TO LANDSCAPE DRAWINGS
- EL-20

WALL LIGHT FIXTURE, REFER TO ELECTRICAL
- EL-21

PREFINISHED METAL CAP FLASHING
- EL-22

SLOPED SHINGLE ROOF.
- EL-23

LOUVER VENT.
- EL-24

WINDOW FIRE SHUTTER

