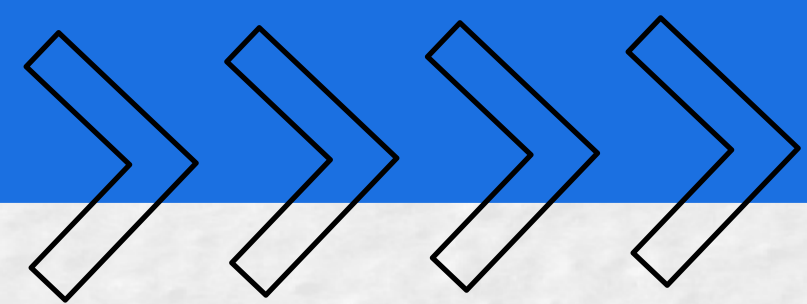


JANUARY 13, 2025

2025 BUDGET ADOPTION



2025 BUDGET PRIORITIES

- Maintain current service levels
- Continue investment in capital assets through;
 - Capital plan - 10-year capital plan
 - Capital replacement reserve
 - Increased Asset Management Levy (0.25%)
 - Additional funds to fire capital replacement reserve



BUDGET PRESSURES

ASSET MANAGEMENT

- Infrastructure deficit
- Annual Capital Requirements to maintain
- Inflation index
- Contribution to reserves for future replacement

NO ASSESSMENT INCREASE

- Re-assessment deferred since 2021
- Impact of hike in real estate prices unknown
- Ontario government to conduct review of property assessment and taxation system

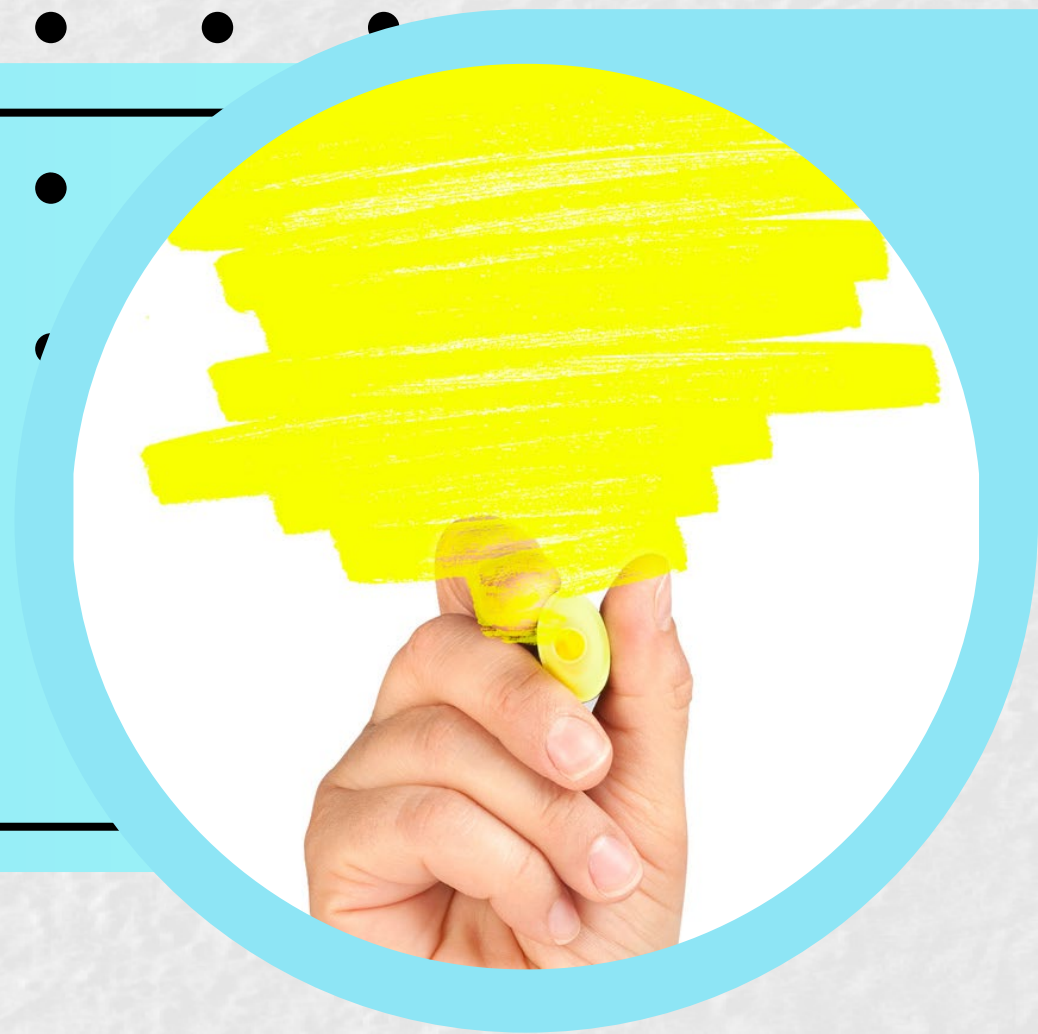
COST OF LIVING

- Last year CPI was 3.6% as of Sept 2023
- Most recent CPI available is 2.7% for July 2024
- Impacts on gravel prices, vehicle costs, fuel, utilities, etc.

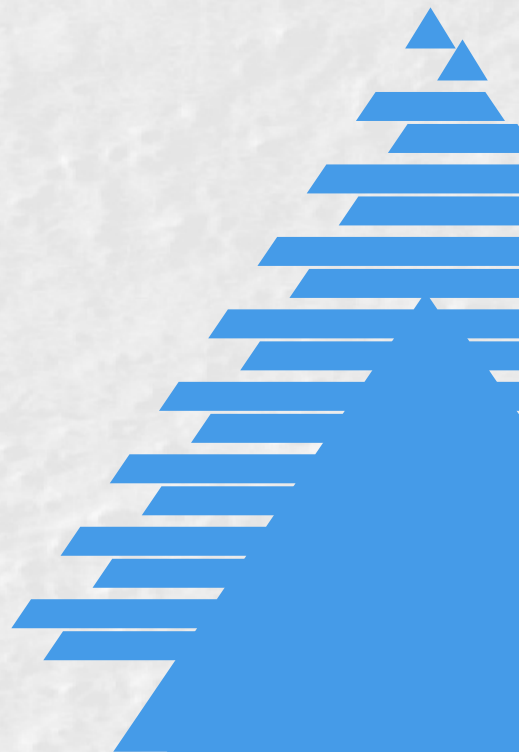
STAFFING

- Minimum wage increases
- Difficulties maintaining competitiveness during recruitment
- Overall wage/benefits increases due to grid movements and COLA increases

2025 OPERATING KEY INITIATIVES



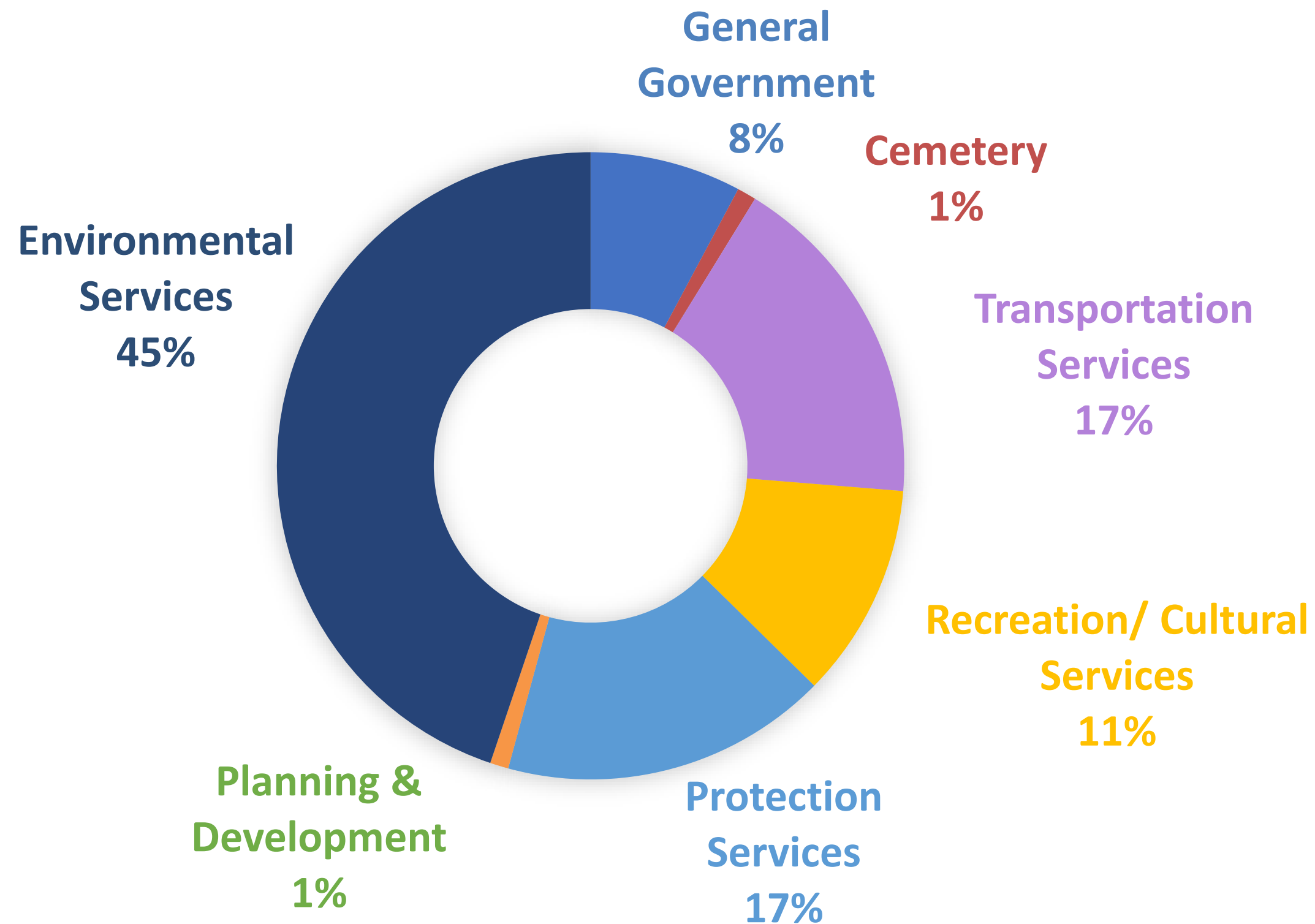
- Commitment to Asset Management program
 - Through increased contribution to Asset Management levy
 - Updated Asset Management Plan to meet next O.Reg. 588/17 deadline July 2025
 - Levels of Service discussions
- Official Plan & Zoning By-Law Updates, Development charges background study and CIP to be completed in 2025



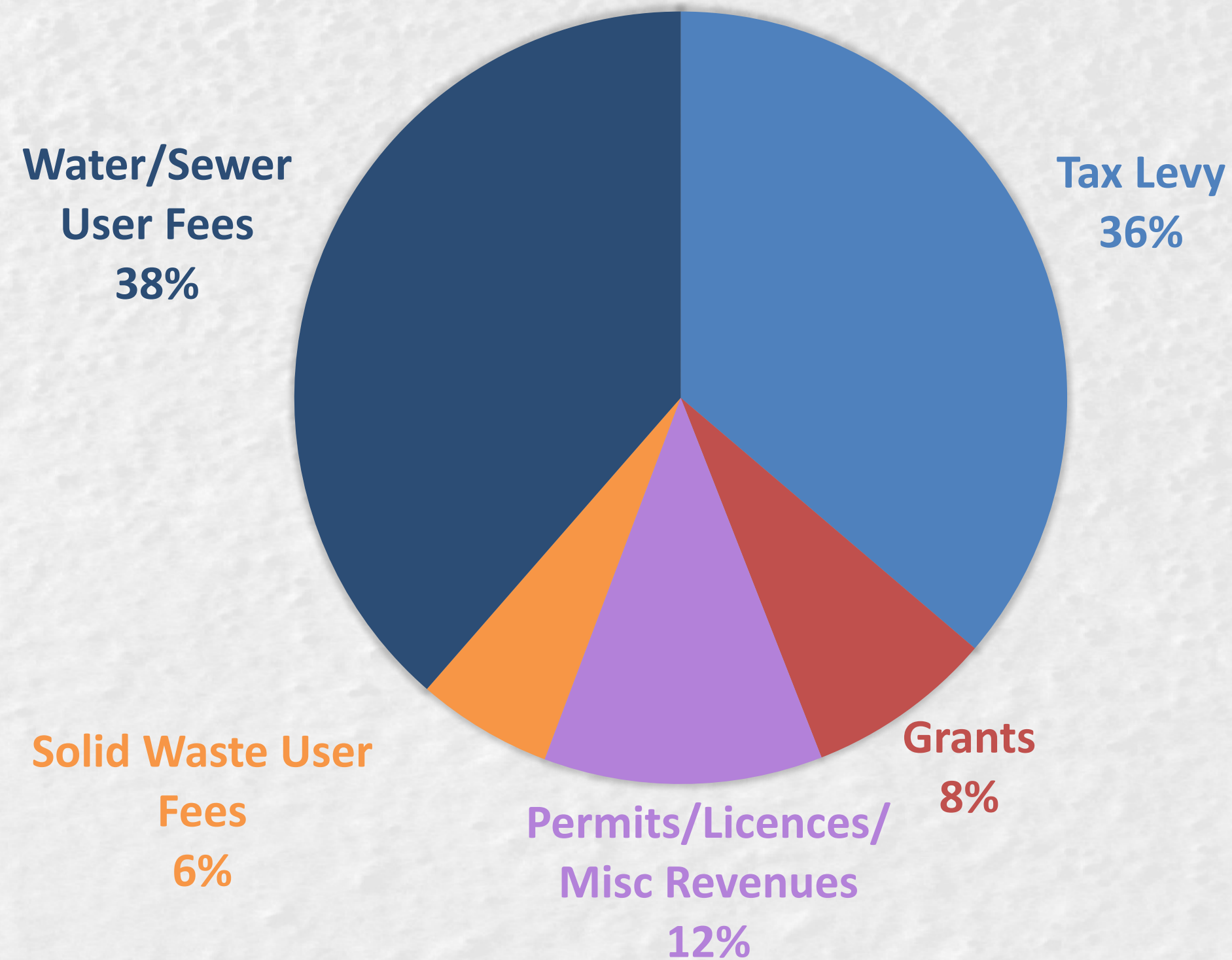
2025 OPERATING SPENDING



\$25 M
Operating
Expenses



2025 SOURCES OF OPERATING FUNDING



2025 CAPITAL PROJECTS HIGHLIGHTS

- 5.06 km Road Resurfacing
 - Huron Street West– West Town Limit to Airport Line (1.06 km)
 - Corbett Line – Crediton Road to Mount Carmel Drive (4 km)
- Bridge/Culvert Repairs/Upgrades
 - Morrison Line – Structure #3003 Repairs
 - B-Line - Structure #1096 Repairs
 - B-Line Structure #1098 Engineering for Repairs
- Pedestrian Crossover near downtown Exeter Parkette



2025 CAPITAL PROJECTS HIGHLIGHTS

- Urban Reconstruction Projects
 - Finishing Main St. North Reconstruction (Walper St to Ausable River)
 - Part of approved Connecting Link Project, includes roads, storm sewers, sanitary sewers, and watermains
 - Victoria Street East Reconstruction (Main St to East End)
- Facility Capital Projects
 - Dashwood Fire Station Replacement
 - Exeter Cemetery Columbarium
 - SHRC Diamond 1 and 2 light standard replacement
 - SHRC Rooftop furnace replacement

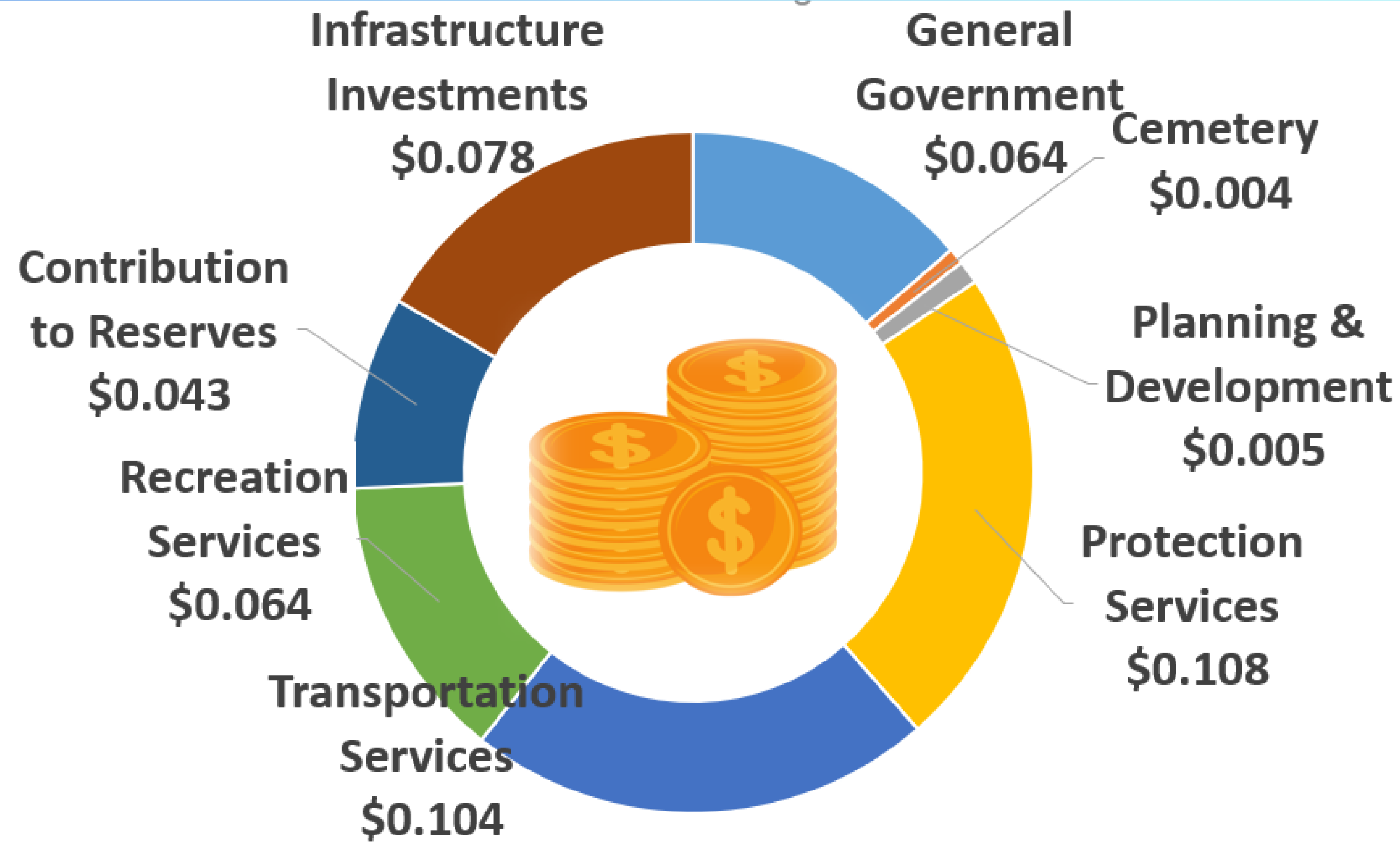


2025 CAPITAL PROJECTS HIGHLIGHTS

- Water & Sewer
 - Gore Road Watermain Upgrade (Highway #21 to B-Line)
 - Grand Bend Line Watermain Upgrade (B-Line to Grand Bend Airport)
 - Exeter Sewage Lagoon Sand Filter Rehabilitation
 - Huron Park Sewage Pumping Station Equalization Tank
 - I&I Reduction Program
- Fleet & Equipment
 - PPE Equipment
 - Pickup Trucks
 - Shoulder machine attachment



WHAT SERVICES YOUR 2025 TAX DOLLARS SUPPORT



School Boards \$0.18

County \$0.35

Municipal \$0.47

IMPACT ON TAX BILL

Based on \$446,263 Levy increase	Rural Ward 1 & 3	Urban Ward 2
Annual Increase on \$100,000 residential assessment	20.02	17.00
Annual Increase on \$285,201 residential assessment (SH average)	57.09	48.48
Tax Rate Increase	3.20%	2.36%
2025 Projected Municipal Residential Tax Rate	0.006459611	0.007358541
2025 Municipal Taxes based on SH Average 2023 Residential Assessment	\$ 1,842.29	\$ 2,098.66

County and School Board
rates are not available