



Social Research &  
Planning Council



Beta version

**myPerthHuron**

Discovering the well-being  
of our communities



**United Way**  
Perth-Huron



# myPerthHuron

## Advisory Committee

### **Tracy Van Kalsbeek – Chair**

Executive Director  
Stratford Perth Community Foundation

### **David Blaney – SRPC Co-chair**

Municipal Councillor  
Huron East

### **Erica Clark – SRPC Co-chair**

Epidemiologist  
Huron County Health Unit

### **Ken Clarke**

Data Analyst Coordinator  
Perth Care for Kids

Director

Social Research & Planning Council

### **Don Cowan**

Distinguished Professor Emeritus  
University of Waterloo Computer Systems  
Group

### **Kyle Young**

Research Associate  
University of Waterloo Computer Systems  
Group

### **Ryan Erb**

Executive Director  
United Way Perth-Huron

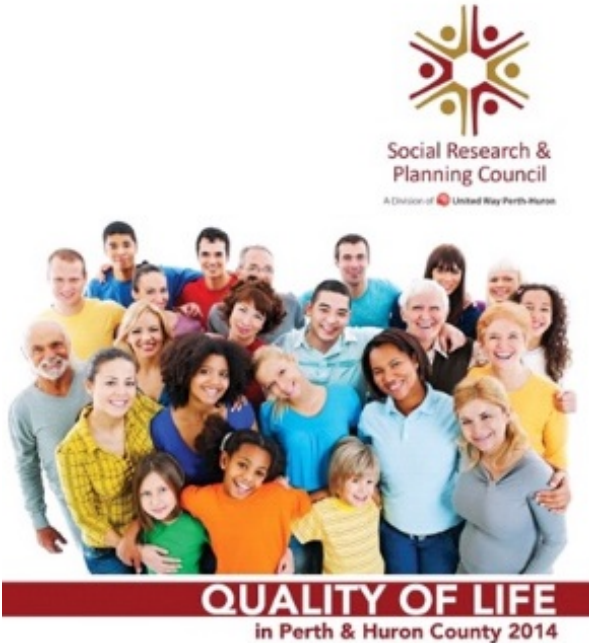
### **Kathy Vassilakos**

Councillor  
City of Stratford



Social Research &  
Planning Council

Computer  
Systems  
Group  
University of Waterloo



**QUALITY OF LIFE**  
in Perth & Huron County 2014



Lack of Available  
Data

**Problem**



Online  
Platform

**Solution**

# Current Community Practice

## Obtain data

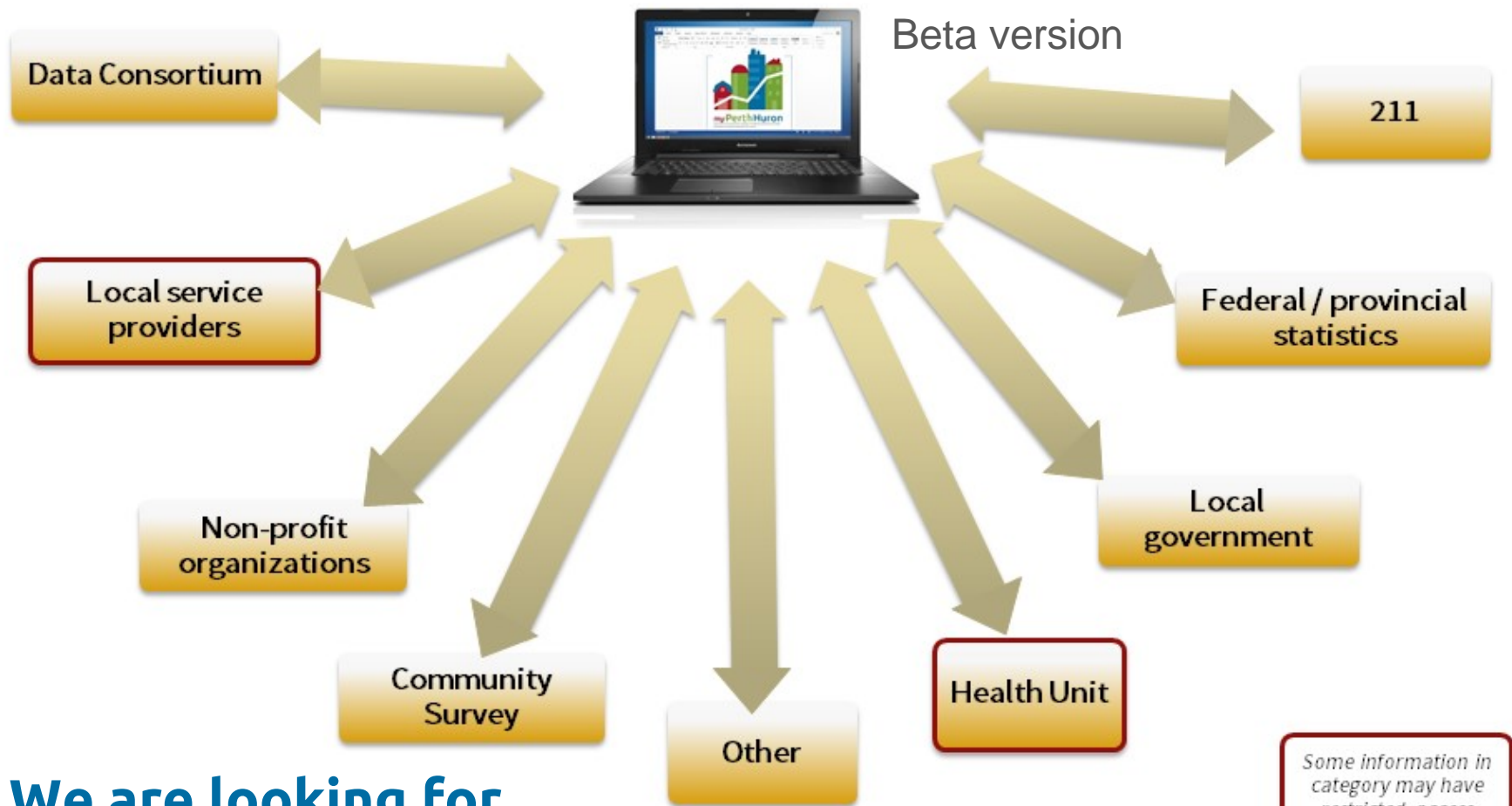
- StatsCan
  - Reliable, old
- Questionnaires
  - Sample
  - Unavailable data
- Diagnose

## Issues

- Data is old (5 years?)
  - Not community-based
- No treatment
- No way to measure treatment

*Community organizations are a huge source of data!*





**We are looking for feedback!**



# Where to begin?

**Arthritis, by age group and sex  
(Number of persons)**

	2010	2011
<b>Total, 15 years and over</b>	<b>4,451,557</b>	<b>4,756,842</b>
<b>Males</b>	<b>1 706 044</b>	<b>1 753 302</b>
<b>Females</b>		

Geography = Canada

15 to 19 years

**Farm cash receipts  
(\$ thousands)**

Males

Females

20 to 34 years

Males

Females

**Total farm cash receipts**

**Total crops**

Wheat, excluding durum<sup>1</sup>

Wheat, excluding durum, marketing  
board payments<sup>1</sup>

Durum wheat<sup>1</sup>

Durum wheat, marketing board  
payments<sup>1</sup>

Oats

Barley<sup>1</sup>

Barley, Canada wheat board  
payments<sup>1</sup>

**Energy use and greenhouse gas emission**

**Total direct and indirect household energy use (petajoules) <sup>2</sup>**

**Direct household energy use (petajoules) <sup>3</sup>**

**Indirect household energy use (petajoules) <sup>4</sup>**

**Household energy use per unit of expenditure (index, 1990=100)**

**Total direct and indirect household greenhouse gas emissions (megatonnes) <sup>5</sup>**

2010/2011

2011/2012

**Occupations in art, culture, recreation and sport [F]**

**Sales and service occupations [G] <sup>6</sup>**

**Wholesale, technical, insurance, real estate sales specialists, and retail, wholesale and grain buyers [G1]**

**Retail salespersons, sales clerks, cashiers, including retail trade supervisors [G011, G2-G3]**

Low income cut-off		
	Family size	1976-2014
Rural areas	1 person	13,188
	2 persons	16,051
	3 persons	19,987
	4 persons	24,934
	5 persons	28,394
	6 persons	31,489
	7 persons or more	34,585

6,455.8 6,369.6

2,329.5 2,341.6

4,126.4 4,028.0

81.3 77.4

422.4 413.8

Geography	Perception of police responding quickly to calls	Statistics	2014
Canada	Good job	Number of persons (x 1,000)	16,653
		Percent	10.4
	Average or poor job	Number of persons (x 1,000)	7,735
		Percent	26.2
		Number of persons (x 1,000)	5,129

Source: Statistics Canada



Where are all the water fountains  
in our communities?



**How many people use food banks  
every month in our communities?**

How many youth are playing after school  
sports in our communities?

How many adults play organized  
sports in our communities?

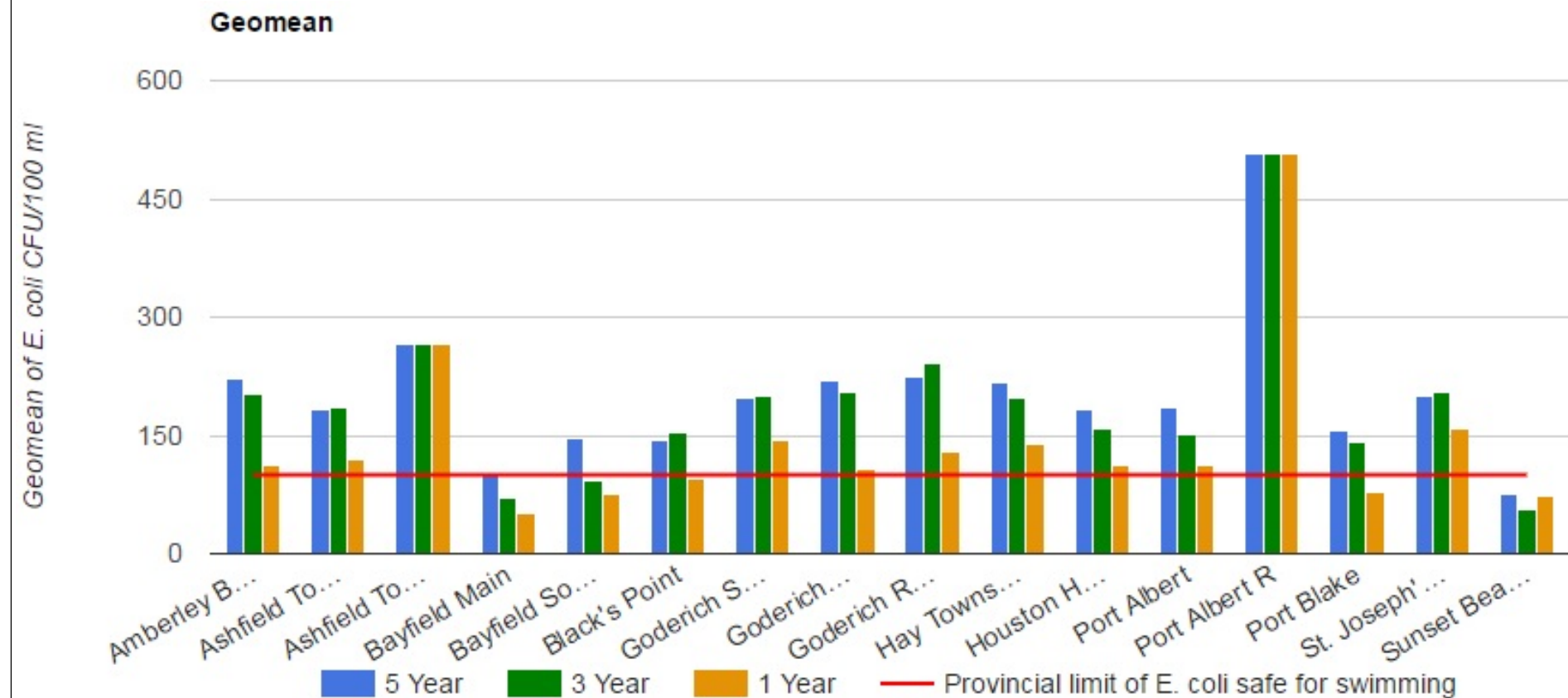
**What beaches have the best water quality in  
our communities?**

Where are all the public  
washrooms in our communities?

How many churches are in  
our communities?

**What children's programs are available  
during the summer in our communities?**

# Beach Data - E.Coli levels





# Community Stories

- Impact of business closing
- Food distribution centres
  - Number
  - Location vs need
- Education
  - Type of graduates
  - Need for breakfast programs
- Health
  - Location of clinics vs need
  - Health versus income





# Community Impact

- **Measure and act on state of community**
  - Measure state of community
  - Create policy, infrastructure, services
  - Measure effect, modify if necessary
- **How**
  - Gather current community data (housing, income, food, volunteering, health, education ...)
  - Use data to guide policy, service delivery, infrastructure creation and modification
  - Tools, maps and data to show state of community
  - Secure, private



## Discovering the well-being of our communities

[Home](#) [About](#) [Indicators](#) [Data Sharing Organization](#) [Data Sets](#) [Resources](#) [Log On](#)

[PRINTABLE VERSION](#)

### What is myPerthHuron

It is an online resource to help track the well-being of our communities, where we are doing well, where community challenges may be emerging and discovering what makes our community unique.

Discovering the general well-being of individuals and society, is defined in terms of health and happiness, rather than simply wealth. In many respects, quality of life indicators representing well-being are subjective. What is considered to be 'good' varies from individual-to-individual and community-to-community. But with these tools we will be able to discover the values in these indicators.



### Keyword Search

Search

### We'd like to hear from you.

The myPerthHuron initiative is currently in beta phase. We are looking for community feedback to help us improve the quality and usability of this data resource. [Send feedback.](#)

[Terms of Use](#) | [Privacy Policy](#)  
Supported by





## Discovering the well-being of our communities

[Home](#) [About](#) [Indicators](#) [Data Sharing Organization](#) [Data Sets](#) [Resources](#) [Log On](#)

[PRINTABLE VERSION](#)

[Community Profile](#)  
[Community Vitality](#)  
[Democratic Engagement](#)  
[Education](#)  
[Environment](#)  
[Healthy Populations](#)  
[Housing & Homelessness](#)  
[Leisure & Culture](#)  
[Living Standards](#)  
[Time Use](#)

## Indicators

### Indicator Selection

The base list of indicators have been based off the 2014 Quality of life report.

### Sources of Information

Data has been pull from a variety of sources and where ever possible data for both Perth and Huron Counties including the town of St.Marys and the city of Stafford being represented at the lower tier level.

### Data Limitations

Each domain includes a brief description and graphic illustration of the indicator data (i.e. what it measures? Why it matters? What the latest data says?). Inferences and conclusions, however, have purposely not been drawn.

### We'd like to hear from you.

The myPerthHuron initiative is currently in beta phase. We are looking for community feedback to help us improve the quality and usability of this data resource. [Send feedback.](#)

[Terms of Use](#) | [Privacy Policy](#)

Supported by







## Discovering the well-being of our communities

Home About **Indicators** Data Sharing Organization Data Sets Resources Log On

[PRINTABLE VERSION](#)

Community Profile  
Community Vitality  
**Democratic  
Engagement**  
Municipal Voter Rates  
Provincial Voter Rates  
Federal Voter Rates  
Acclaimed  
Education  
Environment  
Healthy Populations  
Housing &  
Homelessness  
Leisure & Culture  
Living Standards  
Time Use

### Municipal Voter Data

#### Municipal Voter Search

##### Location (Huron)

- |                                      |   |                                    |   |
|--------------------------------------|---|------------------------------------|---|
| <input type="checkbox"/> Huron       | <input type="checkbox"/> Central Huron              | <input type="checkbox"/> Bluewater | <input type="checkbox"/> Morris-Turnberry |
| <input type="checkbox"/> Huron East  | <input type="checkbox"/> South Huron                | <input type="checkbox"/> Howick    | <input type="checkbox"/> Goderich         |
| <input type="checkbox"/> North Huron | <input type="checkbox"/> Ashfield-Colborne-Wawanosh |                                    |   |

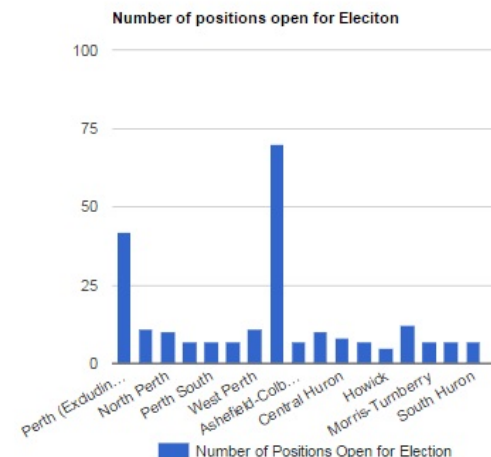
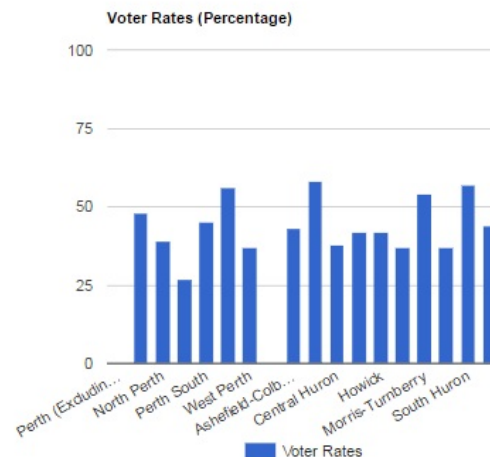
[Select All](#)

##### Location (Perth)

- |                                     |                                      |                                      |                                    |
|-------------------------------------|--------------------------------------|--------------------------------------|------------------------------------|
| <input type="checkbox"/> Perth      | <input type="checkbox"/> Perth South | <input type="checkbox"/> North Perth | <input type="checkbox"/> St. Marys |
| <input type="checkbox"/> Perth East | <input type="checkbox"/> West Perth  | <input type="checkbox"/> Stratford   |                                    |

[Select All](#)

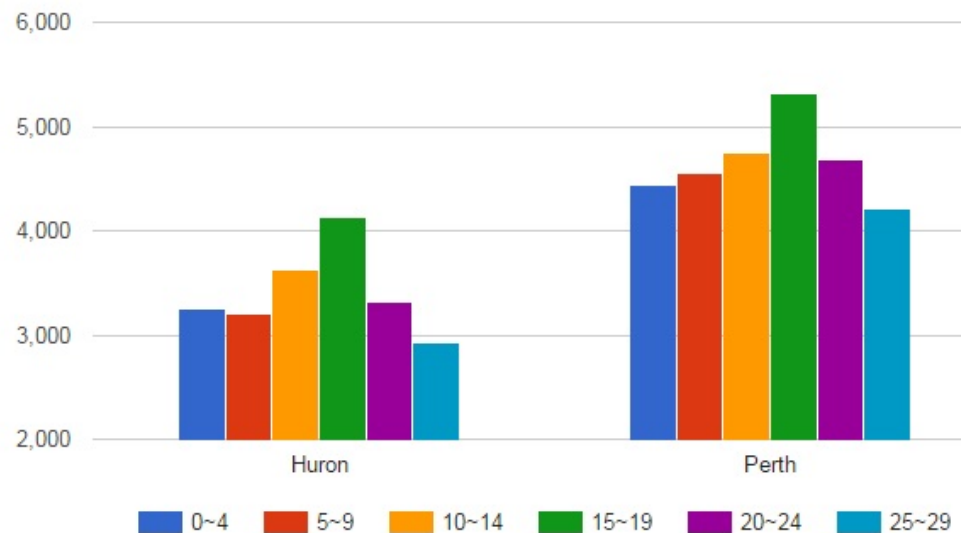
Search



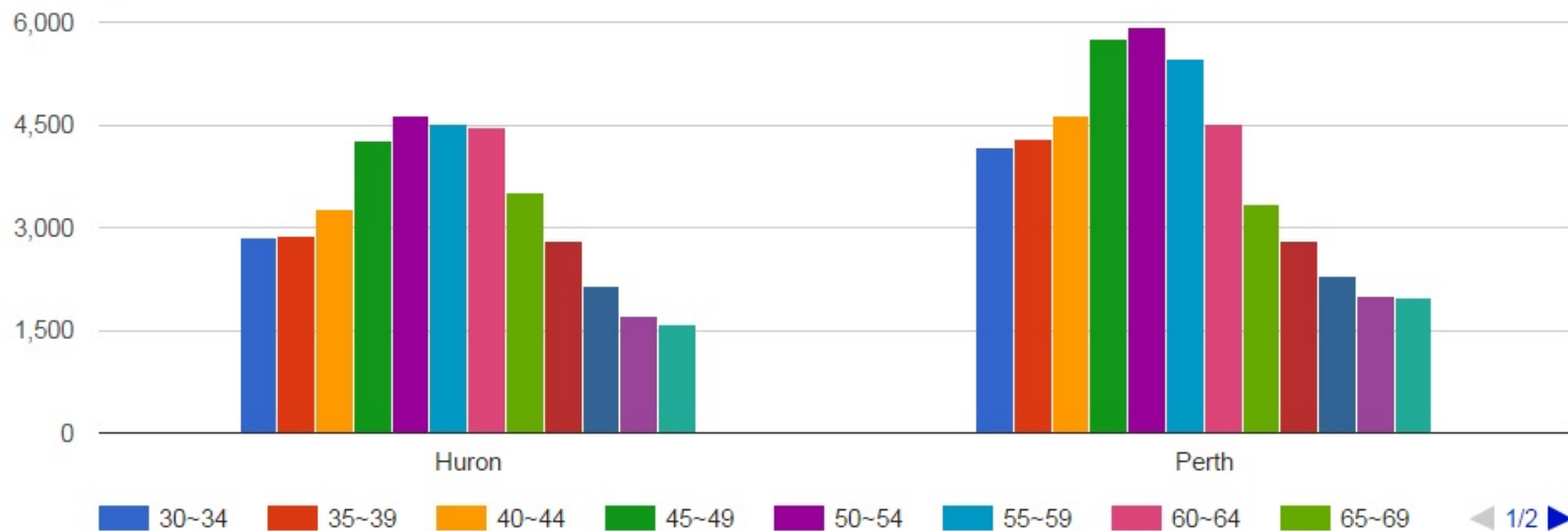
**Total Population**



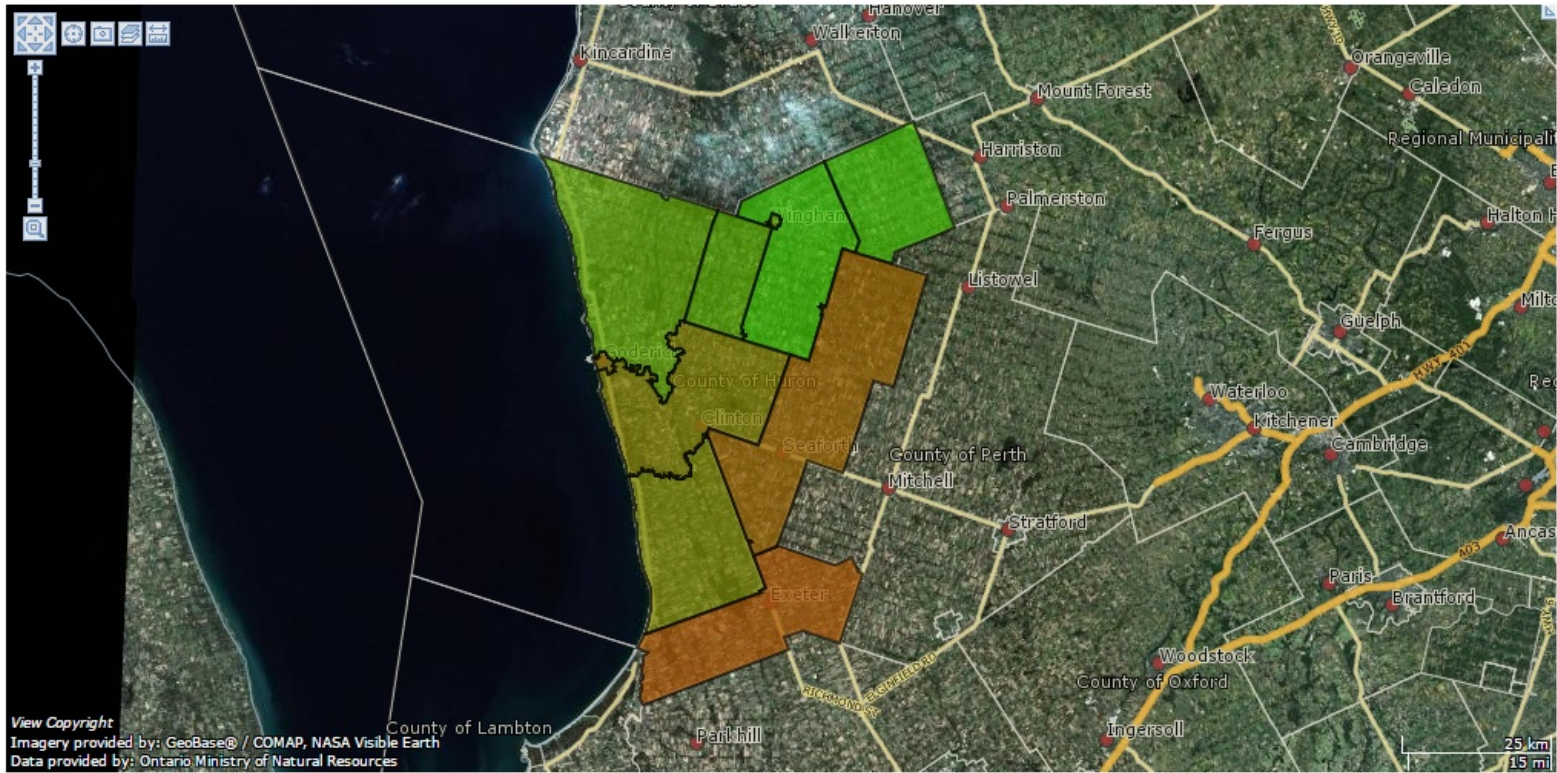
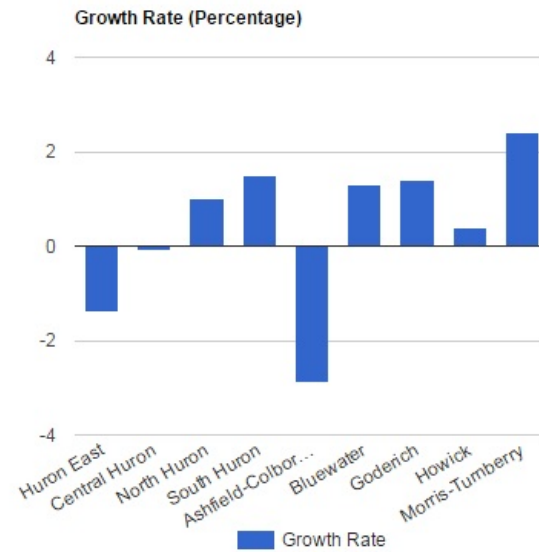
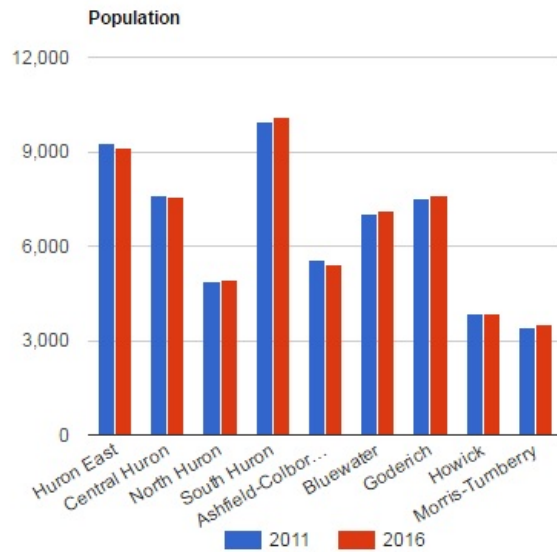
**Age Distribution**



**Age Distribution**







[SAVE RESULTS AS CSV FILE](#)

Displaying Entries 1 to 50 of 416<sup>24</sup>

Characteristics	Total	Male	Female	Year	Location	Note
Total population by age groups	12630	6255	6380	2011	North Perth	4
0 to 4 years	870	405	465	2011	North Perth	
5 to 9 years	820	430	390	2011	North Perth	
10 to 14 years	805	435	370	2011	North Perth	
15 to 19 years	895	450	450	2011	North Perth	
15 years	180	100	80	2011	North Perth	
16 years	180	85	100	2011	North Perth	
17 years	160	75	85	2011	North Perth	
18 years	180	85	95	2011	North Perth	
19 years	195	105	90	2011	North Perth	
20 to 24 years	795	410	390	2011	North Perth	
25 to 29 years	810	410	395	2011	North Perth	
30 to 34 years	780	380	395	2011	North Perth	
35 to 39 years	720	370	350	2011	North Perth	
40 to 44 years	700	365	330	2011	North Perth	
45 to 49 years	885	420	465	2011	North Perth	
50 to 54 years	940	465	475	2011	North Perth	
55 to 59 years	840	445	400	2011	North Perth	
60 to 64 years	690	350	340	2011	North Perth	
65 to 69 years	530	255	275	2011	North Perth	
70 to 74 years	500	240	260	2011	North Perth	
75 to 79 years	415	195	225	2011	North Perth	
80 to 84 years	345	135	210	2011	North Perth	
85 years and over	290	105	185	2011	North Perth	
Median age of the population	38.9	37.9	39.8	2011	North Perth	5
% of the population aged 15 and over	80.2	79.7	80.8	2011	North Perth	
Total population by age groups	3995	2065	1930	2011	Perth South	4
0 to 4 years	180	100	80	2011	Perth South	
5 to 9 years	235	120	110	2011	Perth South	
10 to 14 years	300	155	150	2011	Perth South	
15 to 19 years	350	170	180	2011	Perth South	
15 years	65	40	30	2011	Perth South	
16 years	80	45	35	2011	Perth South	
17 years	65	30	35	2011	Perth South	
18 years	65	25	40	2011	Perth South	
19 years	70	35	40	2011	Perth South	
20 to 24 years	285	155	135	2011	Perth South	
25 to 29 years	160	80	80	2011	Perth South	
30 to 34 years	185	95	85	2011	Perth South	





## Discovering the well-being of our communities

[Home](#) [About](#) [Indicators](#) [Data Sharing Organization](#) [Data Sets](#) [Resources](#) [Log On](#)

[PRINTABLE VERSION](#)

### Huron County Health Unit

The Huron County Health Unit staff work to promote and protect health and prevent disease, illness and injury in the residents of Huron County. We offer public health services that meet our needs in Huron County.

#### Data Sets:

- Beach Water Quality
- Premise Data

### We'd like to hear from you.

The myPerthHuron initiative is currently in beta phase. We are looking for community feedback to help us improve the quality and usability of this data resource. [Send feedback.](#)

[Terms of Use](#) | [Privacy Policy](#)

Supported by



ONTARIO-CANADA  
ST. MARYS



A Social Research & Planning Council Project.  
© United Way Perth Huron Canada

# Request of Council



- Feedback on beta site
- Data Sharing Agreement